

**2023**

# **GREATER NEW HAVEN**

## **Visitors & Relocation Guide**



**Download  
our App**



**VISITNEWHAVEN.COM**

# COURTYARD<sup>®</sup>

BY MARRIOTT

MARRIOTT  
**BONVOY**<sup>™</sup>

- ♦ Bistro + Bar Open Daily
- ♦ Complimentary Parking
- ♦ Event Rooms Spanning Across 3,500 Sq. Ft. of Flexible Space
- ♦ Outdoor Pool
- ♦ Minutes from Downtown New Haven and Downtown Milford

**It's A New Stay!**

**136 Marsh Hill Rd**

**Orange, CT 06477**

**(203) 799-2200**

**Marriott.com/HVNCO**



- ♦ Extended Stay Rates
- ♦ Complimentary Parking
- ♦ Complimentary Evening social
- ♦ Heated Indoor Swimming Pool
- ♦ Complimentary Breakfast Buffet

**All The Comforts Of Home!**

**99 Marsh Hill Rd**

**Orange, CT 06477**

**203.553.9148**

**Orangenewhaven.homewoodsuitesbyhilton.com**

**Hilton**  
— HONORS —



# SHOPPING & DINING IN THE HEART OF HISTORIC DOWNTOWN NEW HAVEN



## The Shops at Yale



@TheShopsatYale

Apple • lululemon • J.Crew • Gran Gusto *spring* • L.L.Bean  
Urban Outfitters • Harvest Restaurant & Wine Bar • Raggs  
Nice Day Chinese *spring* • Common Grounds Coffee *spring*  
Sneaker Junkies • Warby Parker • More Amour Boutique  
Barnes & Noble • Sherkaan • Arethusa • La Strega *summer*  
Claire's Corner Copia • Üni-Home Life *new* • idiom Boutique  
Philly's • Soap-edi *new* • Villa Lulu • Ashley's & more!

A unique collection of more than 65 local boutiques, national brands, cafes,  
restaurants & attractions with convenient parking in downtown New Haven.  
Plan your visit at [TheShopsatYale.com](http://TheShopsatYale.com).



# EXPLORE LIKE A LOCAL

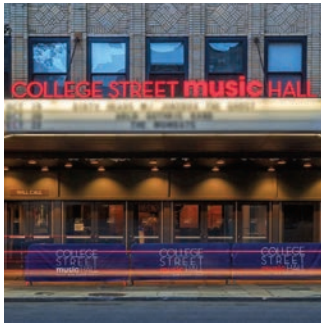
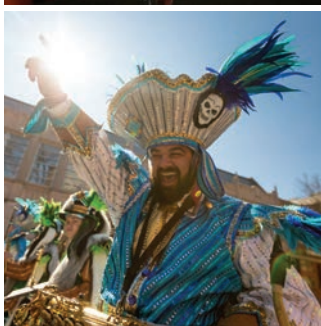
[infonewhaven.com](http://infonewhaven.com)



The New York Times

52 Places to Go  
in 2023

No.  
50 NEW HAVEN



Produced by Market New Haven, Inc. in partnership with

Yale | YaleNewHavenHealth

@infonewhaven

Instagram Facebook Twitter #NHV





*Visit* New Haven

**REX**  
DEVELOPMENT

**SCRCOG**  
SOUTH CENTRAL REGIONAL  
COUNCIL OF GOVERNMENTS

Published by the  
Hartford Courant  
PO Box 569  
Hartford, CT 06141

The Greater New Haven Visitors  
Guide is a publication of:

Rex Development/Visit  
New Haven, PO Box 1576,  
New Haven, CT 06506  
203-777-8550  
[visitNewHaven.com](http://visitNewHaven.com)

South Central Regional  
Council of Governments,  
127 Washington Ave., 4th Floor  
West, North Haven, CT 06473

Production Manager:  
Barbara Malmberg

For a full listing of  
regional partners, go to  
[visitNewHaven.com](http://visitNewHaven.com)



**Region**



**Arts**



**History**



**Best of Food & Drink**



**Things To Do**



**Annual Events**



**Shopping**



**Here, There & Everywhere**



**Accommodations**



**Relocation Guide**

**Living in Greater New Haven**  
**Regional Economic Overview**  
**Flourishing Sectors**  
**Workforce**  
**Resources**



**List of Advertisers**

This guide is produced for information and the guidance of individuals seeking cultural assets or visiting the Greater New Haven area. Every effort has been made to compile this information as accurately as possible. Visit New Haven/REX Development does not assume responsibility for any errors or omissions. Please notify Visit New Haven/REX Development of any changes to the information presented here so it can be corrected in subsequent issues. Thank you.



**THE PLACE TO  
FEEL GOOD**

*all year long!*

FARM MARKET • WINERY  
BAKERY • CSA • CREAMERY  
PICK YOUR OWN • EVENTS  
CURBSIDE PICKUP

**BISHOP'S  
ORCHARDS**

**BISHOPSORCHARDS.COM**



US RTE. 1, I-95 EXIT 57, GUILFORD

203-453-2338

MON-SAT 8AM-7PM, SUN 9AM-6PM



CALL 203-458-PICK FOR INFO ON OUR PICK YOUR OWN.





## Live Like a Local

High Street Arch

The  
New York  
Times

52 Places to Go  
in 2023

No. 50

NEW HAVEN

What do New Haven, Auckland, London, and Istanbul have in com-

mon? They are all on the prestigious New York Times 2023 "52 Places to Go" list. With a nod to the human need to explore the world around us, the chosen destinations feature diverse cultural, dining, and community experiences. Best of all, many of these activities are located in New Haven's walkable downtown. With an extensive public art collection and architectural gems, it is a great way to get your steps in.

New Haven may have captured the attention of the New York Times, but we know there is more to Greater New Haven than our stunning core city. With 15 towns, we encourage you to explore the area for a broad selection of activities.

Our shoreline offers beautiful beaches, including two beachfront state parks, **Silver Sands Beach State Park** in Milford and **Hammonasset Beach State Park** in Madison. West Haven boasts a 1.5-mile boardwalk along its sandy shores, while **Lighthouse Point Park** in New Haven features both a carousel and a lighthouse. If you are ready to hit the water, you can enjoy Long Island Sound at varying degrees of exertion. For energetic rowers, **Scout**

**& Paddle** fits the bill. For a little less effort, try the **Pedal Cruise**, a BYOB pedal-powered party boat departing from **Milford Harbor** with a swing by **Charles Island**, one of the many alleged hiding places of Captain Kidd's treasure along our shoreline. Three tour boats sail through Branford's Thimble Islands for a leisurely outing. When your adventures are done, several excellent restaurants await along the shore, including **Dockside Restaurant**, **Stonebridge**, **Guilford Mooring**, **Sandpiper Restaurant**, and the **Q River Grill**.

If you are looking for an outdoor destination without getting sandy feet, head inland, where the offerings change with the seasons. Towns offer extensive trail routes for hiking and biking. Hamden's **Sleeping Giant State Park** offers a 1.5-mile trail to the mountaintop with views of Long Island Sound on a clear day. **The Farmington Canal Trail** extends from New Haven into Massachusetts. **Paradise Hills**, **Gouveia**, and **Rose Vineyards and Wineries** serve locally-produced wine in picturesque settings to quiet the mind and soothe the soul.

Greater New Haven is known for its annual events, including the **Connecticut Winter Wine Trail**, **Connecticut Open House Day**, the **International Festival of Arts & Ideas**, the **New Haven Grand Prix**, and the **New Haven Road Race**.

**BEST OF Hartford MAGAZINE 2019 WINNER**  
**BEST OF Hartford MAGAZINE 2020 WINNER**  
**BEST OF Hartford MAGAZINE 2021 WINNER**  
**BEST OF Hartford MAGAZINE 2017 WINNER**  
**BEST OF Hartford MAGAZINE 2018 WINNER**

**BEST OF Hartford MAGAZINE 2022 WINNER**



Connecticut  
Science Center



[CTScienceCenter.org](http://CTScienceCenter.org) | 250 Columbus Blvd., Hartford, CT



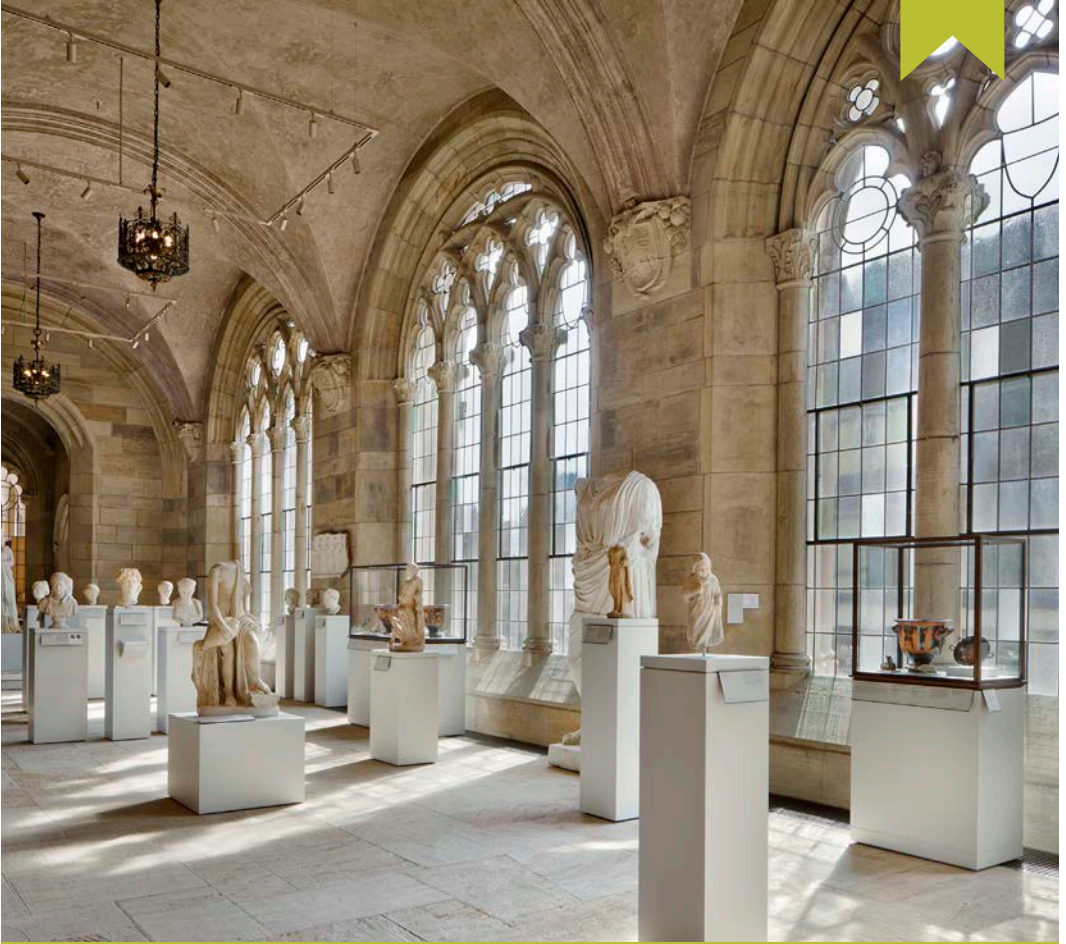
University of New Haven

# Success Starts Here



Opened in 2020, the 45,000 square-foot **Bergami Center for Science, Technology, and Innovation** features collaborative classrooms, engineering and science labs, a video production studio, a makerspace, and an esports competition space.





## Creativity Thrives in Greater New Haven

*View of the ancient art galleries, Yale University Art Gallery. Photo credit: Elizabeth Felicella*

The arts in Greater New Haven range from world-class to the downright quirky, and we love it all. As the home of Yale University, we have access (often free, thanks to the generosity of donors) to collections selected from literally millions of paintings, sculptures, coins, books, and manuscripts.

While the **Yale Center for British Art** undergoes a conservation project through 2023, the **Yale University Art Gallery** highlights more than 60 paintings from the YCBA's collection in a new exhibition, *In a New Light: Paintings from the Yale Center for British Art*. These paintings join the extensive collection of 180,000 pieces in the gallery's permanent collection. Smaller galleries throughout the region showcase the paintings, pottery, sculpture, and jewelry created by local artists.

Greater New Haven is also home to several

renowned festivals, including the **International Festival of Arts & Ideas** (June). In 2023, Guilford will host the Guilford Art Center's **Craft Expo** (July), offering nationally recognized American artists' handmade crafts, and the **Guilford Performing Arts Festival** (September).

Theater in Greater New Haven ranges from traditional to avant-garde. The **Shubert Theatre** consistently delivers Broadway hits and special events. **Long Wharf Theatre**, now an itinerant theater bringing performances throughout the city, and the **Yale Repertory Theatre** produce many original plays depicting contemporary themes.

For music fans, catch live performances by the **New Haven Symphony Orchestra** or rock out at the **Westville Music Bowl** or **College Street Music Hall**.

## Arts

### MUSEUM/GALLERY

**Blessed Michael McGivney Pilgrimage Center**, 1 State St., New Haven. The Blessed Michael McGivney Pilgrimage Center's mission focuses on the spirituality and charitable vision of the founder of the Knights of Columbus and his legacy. Free. 203-865-0400, michaelmcgivneycenter.org

**Guilford Art Center**, 411 Church St., Guilford. Non-profit school, shop, and gallery. Classes and workshops in blacksmithing, ceramics, fiber arts, glass, metalsmithing, painting, photography, stone carving, weaving, and more for adults and children. The gallery presents juried and invitational exhibits. The shop carries fine American crafts by American artists. Tuition is charged per class; entry to the gallery and shop is free. 203-453-5947, guilfordartcenter.org

**Morris Steinert Collection of Musical Instruments at Yale**, 15 Hillhouse Ave., New Haven. The

Collection is home to hundreds of musical instruments from antiquity to the present. We offer three galleries, an audio tour, and an annual series of concerts. 203-432-0822, music.yale.edu/collection

**NXTHVN**, 169 Henry St., New Haven. NXTHVN is a new national arts model, founded by Titus Kaphar, Jason Price, and Jonathan Brand, that empowers artists and curators through education and access to a vibrant ecosystem. The gallery presents several exhibitions each year. nxthvn.com

**Palestine Museum**, 1764 Litchfield Tpke., Woodbridge. The museum preserves Palestinian history, showcases the Palestinian experience, and shares the Palestinian story with the U.S. and global audiences through works of art, film, literature, and mixed media. 203-530-2248, palestinemuseum.us

**Yale Center for British Art**, 1080 Chapel St., New Haven. The Yale Center for British Art is closed through 2023 for building conservation. However, the Yale University Art Gallery presents *In a New Light*: Paintings from the Yale Center for British Art, a selection of more than 60 paintings from the YCBA's

collection. 203-432-2800, britishart.yale.edu

**Yale Peabody Museum of Natural History**, 170 Whitney Ave., New Haven. The museum is closed while undergoing a major renovation project to be completed in 2024. 203-432-8987, peabody.yale.edu

**Yale University Art Gallery**, 1111 Chapel St., New Haven. Yale University Art Gallery is the oldest college art museum in America. The Gallery's encyclopedic holdings, 200,000 objects, range from ancient times to the present day and represent civilizations from around the globe. Free and open to the public. Closed Monday. 203-432-0600, artgallery.yale.edu

### THEATER/MUSIC/DANCE

**John Lyman Center for the Performing Arts**, Southern Connecticut State University, 501 Crescent St., New Haven. The Lyman Center is collaborating with the New Haven Symphony Orchestra and Long Wharf Theatre to reach new audiences and expand arts education at the university. The center continues to present top-name headliners during the academic year. 203-392-6154, lymancenter.org



Live | Work | Shop | Dine | Explore



#### BRANFORD

[www.branford-ct.gov](http://www.branford-ct.gov)  
(203) 315-5279



#### GUILFORD

[www.ci.guilford.ct.us](http://www.ci.guilford.ct.us)  
(203) 453-8071



#### NORTH BRANFORD & NORTHFORD

[www.northbranfordct.gov](http://www.northbranfordct.gov)  
(203) 484-1034

[www.shorelinechamberct.com](http://www.shorelinechamberct.com)



**Legacy Theatre**, 128 Thimble Island Rd., Branford. The Legacy Theatre is a professional theatre company that offers seasonal performances and educational opportunities. 203-315-1901, [legacytheatrecr.org](http://legacytheatrecr.org)

**Long Wharf Theatre**, Various locations, New Haven. Long Wharf Theatre is a creative environment for storytelling that amplifies lived experiences and celebrates our kaleidoscopic world. Consciously inclusive, Long Wharf Theatre produces accessible and boundary-breaking theatre while learning from, and being inspired by, our community—both on and offstage. 203-787-4282, [longwharf.org](http://longwharf.org)

**Milford Arts Council (The MAC)**, 40 Railroad Ave. South, Milford. A visual and performing arts venue right on the Metro North train line at a repurposed train station, surrounded by numerous dining and shopping destinations. The MAC provides a unique setting for live music, theatre, dance, film, art exhibits, and more. As the heart of the arts, we're about intimate, special, and memorable offerings. 203-878-6647, [milfordarts.org](http://milfordarts.org)

**New Haven Symphony Orchestra**, 4 Hamilton St., New Haven. The mission of the New Haven Symphony Orchestra is to increase the impact and value of orchestral music for our audiences through high-quality, affordable performances, and educational programming. 203-865-0831, [newhavensymphony.org](http://newhavensymphony.org)

**Shubert Theatre**, 247 College St., New Haven. The Shubert brings the best of the performing arts to its legendary stage. Best known for its Broadway shows, the theatre presents a variety of performing arts, including solo artists, family-friendly shows, dance, comedy, and more, as well as offering educational and engagement programs that provide access to all members of our community. 203-562-5666, [shubert.com](http://shubert.com)

**See Nightlife for additional venues on pages 29 and 30.**

## PUBLIC ART

**Felice Varini's "Square with four circles"**, 1 Temple St. New Haven. A 110 foot-tall, anamorphic wall mural by internationally-acclaimed artist, Felice Varini. This artwork remains the only large scale outdoor piece in North America by this important artist. It was commissioned by Site Projects | New Haven in 2010. Free. [siteprojects.org/felice-varini-square-with-four-circles-new-haven-2010](http://siteprojects.org/felice-varini-square-with-four-circles-new-haven-2010)

**Public Art in Downtown NHV**, New Haven. An interactive map of downtown New Haven's public art sites created by the Town Green Special Services District. [downtownnewhaven.com/publicart](http://downtownnewhaven.com/publicart)

**Public Art at Yale**, start at Old Campus, College Street. Includes statue of Revolutionary War hero Nathan Hale and Maya Lin's The Women's Table. [visitorcenter.yale.edu/tours/public-art-yale](http://visitorcenter.yale.edu/tours/public-art-yale)

## ART CLASSES & WORKSHOPS

**Guilford Art Center**, 411 Church St., Guilford. Guilford Art Center offers classes and workshops for children and adults year-round. Classes and workshops in blacksmithing, ceramics, fiber arts, glass, metalsmithing, painting, photography, stone carving, weaving, and more for adults and children. Robust children's program for children ages 3½ - 12 years held each summer. Tuition assistance is available. Register at [guilfordartcenter.org](http://guilfordartcenter.org) or call 203-453-5947

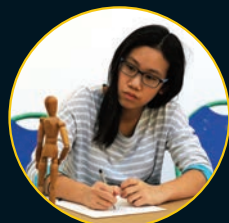
# GUILFORD ART CENTER

Open Year Round

SCHOOL



SHOP



411 Church St, Guilford • I-95, Exit 58  
203.453.5947 • [guilfordartcenter.org](http://guilfordartcenter.org)

**CRAFT EXPO**  
JULY 14 - 16, 2023

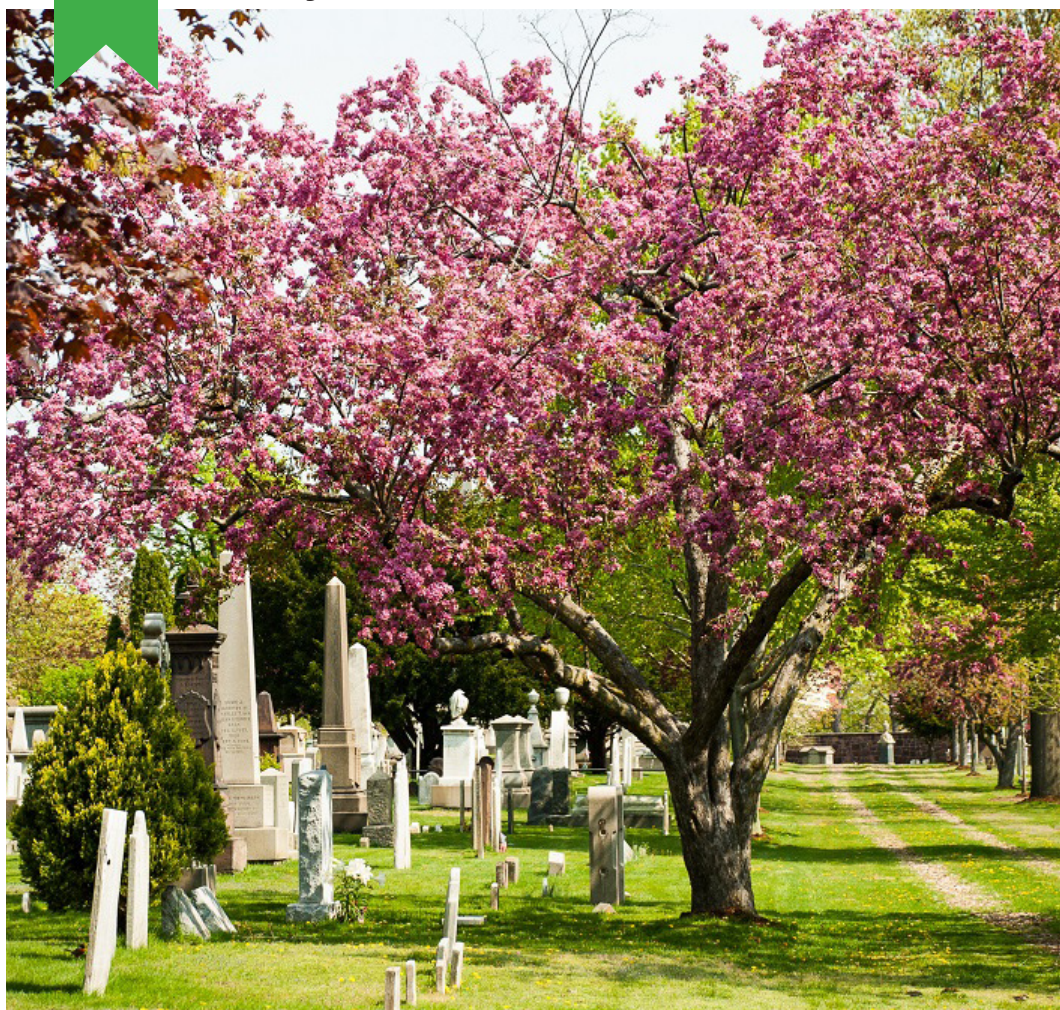
Shop from 170+ modern makers at  
Connecticut's longest running craft show!

Handmade Décor • Fashion & Accessories  
Jewelry • Furniture • Original Artwork  
Yummy Gourmet Specialties • Kids Activities  
Silent Auction • Live Music • Food Trucks



On the Guilford Green: 33 Whitfield Street  
[www.guilfordartcenter.org/expo](http://www.guilfordartcenter.org/expo)

## History



### A Haven for History Buffs

*Grove Street Cemetery Robert Ford/istock.com*

Make the **New Haven Museum** your first stop for a history of the region and its people, from the Quinnipiac tribe to the first English settlers to immigrants from around the world. Permanent exhibits include “From Clocks to Lollipops: Made in New Haven,” treasures from the decorative arts collection, artifacts in the Amistad Gallery, and the recently acquired Linda Lindroth’s oversized Polaroid colorful portraits of distinguished community members. Genealogy buffs will find the museum’s **Whitney Library** an invaluable resource.

Explore the **Grove Street Cemetery**—the final resting place of luminaries like Noah Webster and Eli Whitney—and the **New Haven Green** with its three iconic churches, including **Center Church**, whose crypt contains remnants of the city’s original burial ground. **Yale Univer-**

**sity** offers guided tours of its campus, located here since 1716.

Greater New Haven’s architecture runs the gamut from extant colonial buildings to 20th-century gems designed by Louis Kahn, Paul Rudolph, and Eero Saarinen. Historic structures throughout the region include the **Pardee-Morris House** (New Haven), **Harrison House** (Branford), **Reynolds-Beers House** (North Branford), **The Dudley Farm Museum** (Guilford), **Allis-Bushnell House and Museum** (Madison), **Andrews Homestead** (Meriden), **Jonathan Dickerman House** (Hamden), **Thomas Griswold House** (Guilford), **Thomas Darling House** (Woodbridge), and the oldest house in Connecticut, Guilford’s **Henry Whitfield House State Museum**.



# EXPERIENCE OUR STORY

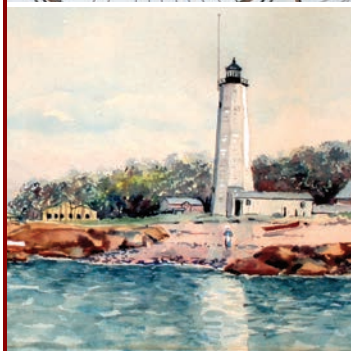


**MASHANTUCKET**  
**PEQUOT**  
**MUSEUM**  
**& RESEARCH CENTER**



PEQUOTMUSEUM.ORG • 860.396.6910  
110 PEQUOT TRAIL, MASHANTUCKET, CT 06338

Come experience the world's  
largest Native American  
Museum and discover the  
story of the Pequot people,  
their connection to their  
environment, hardships and  
their resurgence.



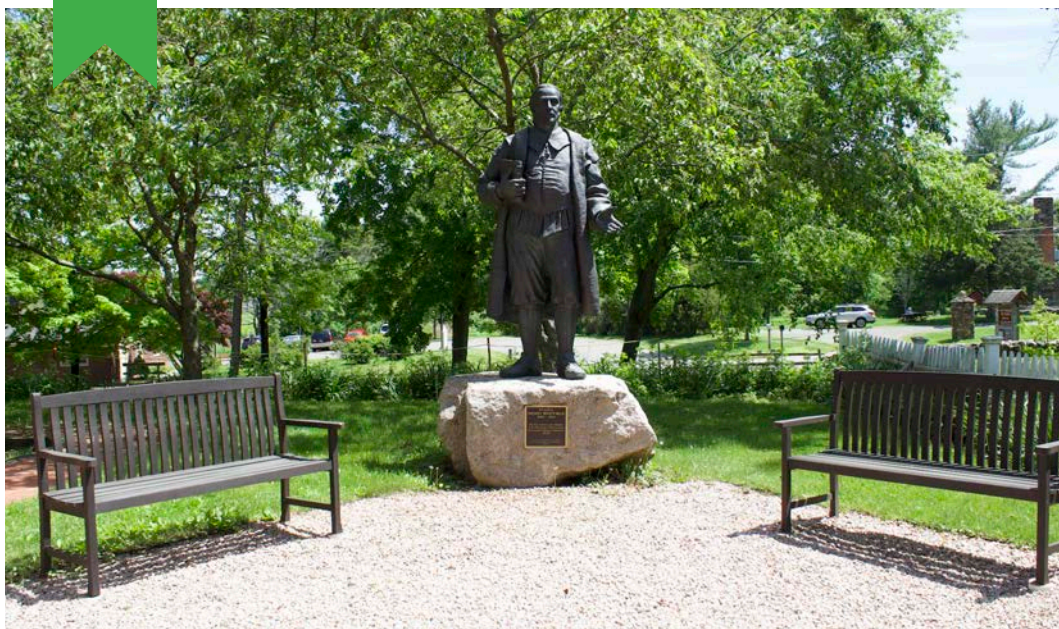
## Museum and Library

114 Whitney Avenue, New Haven, CT • 203-562-4183

**Pardee-Morris House** (open seasonally)

325 Lighthouse Road, New Haven, CT

## History



*Henry Whitfield, Guilford*

### HISTORIC SITES AND MUSEUMS

**The Amistad**, Long Wharf, New Haven. The Amistad is Connecticut's flagship and a replica of the original schooner. In 1839, Mende captives from Sierra Leone took control of the ship but could not navigate back to Africa. After being jailed in New Haven, the U.S. Supreme Court ultimately heard their case for freedom, and in 1841, the Mende captives were ordered freed. The schooner is scheduled to be in New Haven May 1-5 and August 3-19. 860-992-4933, [discoveringamistad.org](http://discoveringamistad.org)

**Amistad Memorial**, 165 Church St., New Haven. This monument of Senghe Pieh (known as Joseph Cinque) stands on the former site of the New Haven Jail, where illegally kidnapped Africans were imprisoned in 1839 while awaiting trial. The work is distinguished by its unique three-sided form, each side highlighting the capture, trial, and return home of Senghe Pieh and his fellow captives. 203-946-8200, [amistadcommitteeinc.org/amistad-memorial](http://amistadcommitteeinc.org/amistad-memorial)

**Beinecke Rare Book & Manuscript Library**, 121 Wall St., New Haven. The 1963 building features translucent marble "windows" and a sculpture garden. The library is one of the world's largest libraries devoted entirely to rare books and manuscripts. It contains a Gutenberg Bible, original Audubon bird prints, and changing exhibits. Free. 203-432-2977, [beinecke.library.yale.edu](http://beinecke.library.yale.edu)

**Connecticut River Museum**, 67 Main St., Essex. The museum tells the story of the

Connecticut River and its people through manuscripts, books, art, and artifacts. It also delivers high-quality exhibitions and educational programming to visitors and residents. 860-767-8269, [ctrivermuseum.org](http://ctrivermuseum.org)

**Grove Street Cemetery** (1796), 227 Grove St., New Haven. A National Historic Landmark, the cemetery has an architecturally prominent Egyptian Revival gateway entrance facing High Street. Eminent people buried there include Noah Webster, Gen. David Humphreys, Roger Sherman, Charles Goodyear, Walter Camp, and Bart Giamatti. 203-787-1443, [grovestreet-cemetery.org](http://grovestreet-cemetery.org)

**Henry Whitfield State Museum** (c.1639), 248 Old Whitfield St., Guilford. The oldest house in Connecticut, this unusual stone building was constructed in 1639 for Henry Whitfield. The Whitfield House features 17th-19th century furnishings and artifacts. A stroll around the landscaped grounds features extensive stone walls, a bronze statue representing Henry Whitfield, and a ship's cannon from the War of 1812. 203-453-2457, [ctvisit.com/listings/henry-whitfield-state-museum](http://ctvisit.com/listings/henry-whitfield-state-museum)

**New Haven Green**, Bordered by College, Chapel, Church, and Elm Sts., New Haven. A National Historic Landmark, the Green is one of the nine squares in America's first planned city. The Green provides a backdrop for three historic churches that are outstanding examples of Gothic, Federal, and Georgian design.

**New Haven Museum**, 114 Whitney Ave., New



## History



*Harrison House, Debi Caron*



*Henry Whitfield House*

Haven. Permanent exhibitions include the New Haven Gallery with the Eli Whitney Cotton Gin; The Amistad Gallery with Nathaniel Joselyn's Cinque Portrait; The Ingersoll Room; Linda Lindroth's oversized Polaroid colorful portraits; and The Maritime Gallery with additional temporary exhibitions. \$4 adult, \$3 senior, \$2 students 19 and over, and free 18 and under. 203-562-4183, [newhavenmuseum.org](http://newhavenmuseum.org)

**Pardee-Morris House**, 325 Lighthouse Rd., New Haven. One of New Haven's oldest structures, the property descended in one family through seven generations. The original 1671 house was burned during the 1779 invasion and reconstructed in 1780. Open seasonally, 12-4 pm on Sundays until the last Sunday in August. Admission is free. 203-562-4183, [newhavenmuseum.org/visit/pardee-morris-house/](http://newhavenmuseum.org/visit/pardee-morris-house/)

**Shore Line Trolley Museum**, 17 River St., East Haven. A National Historic District - Enjoy a ride on a restored trolley from the oldest continuously running suburban trolley line in the USA. The museum maintains several diverse collections of equipment, photographs, documents, and artifacts which preserve the history and heritage of the Trolley Era. Summer and select holidays. 203-467-6927, [shorelinetrolley.org](http://shorelinetrolley.org)

**Thomas Griswold House (1774)/Guilford Keeping Society**, 171 Boston St., Guilford. A 1764 saltbox house with a barn, blacksmith shop, two small corn cribs, and a three-hole privy. (Seasonal) 203-453-2263, [guilfordkeepingsociety.com](http://guilfordkeepingsociety.com)

**West Haven Veterans Museum and Learning Center**, 30 Hood Terrace, West Haven. Our mission is to honor the men and women who served our state and nation during times of

conflict and natural disasters and to collect and preserve artifacts to help in that endeavor. 203-934-1111, [whmilmuseum.org](http://whmilmuseum.org)

**William Lanson Statue**, Lock St. & Canal St., New Haven. The statue commemorates the life of William Lanson, a 19th-century Black entrepreneur from New Haven. His accomplishments include expanding Long Wharf to increase shipping capacity and building the Farmington Canal.

## Discover New England's Great River

River Cruises, World's First  
Submarine, War of 1812,  
Exhibits, Events  
Programs & More!



**Connecticut River Museum**

67 Main Street, Essex, CT 06426  
860.767.8269 | [ctrivermuseum.org](http://ctrivermuseum.org)



**Amistad Memorial  
165 Church St., New Haven**

This monument of Senghe Pieh (known as Joseph Cinque) stands on the former site of the New Haven Jail, where illegally kidnapped Africans were imprisoned in 1839 while awaiting trial. The work distinguished by its unique three-sided form, each side highlighting the capture, trial and return home of Senghe Pieh and his fellow captives.



**Amistad Freedom Schooner  
Discovering Amistad  
Long Wharf Pier, New Haven**

The Amistad, a 129' re-creation (of the original ship) was built in 2000 and commemorates the historic 1839 Amistad Uprising. During this famous incident, 53 kidnapped West Africans organized an uprising and eventually won their freedom in the US Supreme Court. The ship is used as a "floating classroom" to teach the lessons of the Amistad Uprising to advance social justice today.

Discovering Amistad engages children, adults and families in a discovery process to explore the story of The Amistad and its impact on Connecticut and the nation. The ship's homeport is New Haven CT; and it also travels to other CT ports down the Long Island Sound.

For 2023 ship itinerary or to schedule a visit:  
[discoveringamistad.org](https://www.discoveringamistad.org).



**William Lanson Statue  
Lock St. & Canal St., New Haven**

The statue commemorates the life of William Lanson, a 19th century Black entrepreneur from New Haven. His accomplishments include expanding Long Wharf to increase shipping capacity and building the Farmington Canal.



**The Amistad Committee, Inc.**  
<https://www.amistadcommitteeinc.org>



# Visit Palestine Museum US



**1764 Litchfield Turnpike | Woodbridge | CT 06525**  
**<https://www.PalestineMuseum.US> | 203 530-2248**

2021





## Whatever You Choose, You Won't Walk Away Hungry

*Sugar Bakery, East Haven*

Greater New Haven covers just 369 square miles, but our cuisine will take you around the world. New Haven's history of welcoming immigrants translates into a culinary feast that covers five continents. Try **Laibela's** Ethiopian menu or the best of Thailand at **Mai Tai Restaurant**. Sample Afro-Cuban cuisine at **Soul de Cuba** or Latin American fusion at **Pacifico**. The **Union League Café** is a French favorite, and **Lúdâl Italian Restaurant** is an elegant Italian trattoria. **Jalapeño Heaven** specializes in Mexican dishes, while **The Wharf** serves up New American cuisine. This list is just an appetizer of the culinary choices waiting for you throughout the region.

Don't forget to order drinks! Established wineries include **Chamard**, **Gouveia**, **Paradise Hills**, **Savino**, **Rose**, and **Rosabianca**. Beer flows throughout the region as well. Among the most popular breweries are **Stony Creek Brewery** in Branford, with seating overlooking the Branford River, and New Haven's own **East Rock Brewing Company**.

New Haven is best known, of course, as the

home of pizza. Rivals **Sally's Apizza** and **Frank Pepe Pizzeria Napoletana** go up against other hometown favorites like **Modern Apizza**, **BAR**, **Zuppardi's Apizza**, and **Zeneli Pizzeria & Cucina Napoletana**. Visit a few and judge for yourself which one serves up the best slice.

Connecticut's rich farmland means many of our restaurants have embraced local produce. Menus vary with the seasons as our imaginative chefs integrate fresh ingredients into both new and traditional recipes. You can buy fresh yourself at pop-up farmers' markets and shops like **Bishop's Orchards Farm Market** in Guilford and **Hindinger Farm** in Hamden.

A full day of sightseeing should include a break for refreshments, too. Check out the many coffee shops, ice cream parlors, and small cafes along the way, including the top-rated **Arethusa Farm Dairy** in New Haven, **Ashley's Ice Cream** in Branford, New Haven, and Guilford, and **Willoughby's Coffee & Tea** in New Haven, Branford, and Madison, among others.

### RESTAURANTS

Key:

\$ average entree up to \$20

\$\$ average entree \$21-\$29

\$\$\$ average entree \$30 & up

### AMERICAN/CONTINENTAL

**Archie Moore's Bar & Restaurant**,  
archiemoores.com \$

• 988 Main St., Branford.  
203-481-6100

• 15 Factory Ln., Milford. 203-876-5088

• 188 1/2 Willow St., New Haven.

203-773-9870

• 39 N. Main St., Wallingford.

203-265-7100

**Bar August**, 3 Edwards St.,  
New Haven. 203-745-4531,  
baraugust.com \$\$

**Barcade**, 56 Orange St., New Haven.  
203-889-2966,  
barcadenewhaven.com \$

**Double Play Café**, 320 Main St.,  
Wallingford. 203-265-2599,  
doubleplaycafe.com \$

**Elm City Social**, 286 College St.,  
New Haven. 475-441-7436,  
elmcitysocial.com \$\$

**Glenwood Drive-In**, 2538 Whitney  
Ave., Hamden. 203-281-0604,  
glenwooddrivein.com \$



# olea

**innovative spanish &  
mediterranean cuisine**

Tuesday–Saturday  
5 pm–8:30 pm (last seating)

Parking validation (Temple or Crown  
Street garage with \$50+ check)

39 High Street, New Haven, Connecticut  
oleanewhaven.com 203.780.8925

@oleanewhaven on Instagram & Facebook

## 2 GREAT LOCATIONS



482 Greenwich Ave,  
New Haven, CT 06519  
**203-773-8998**

325 Ferry St  
New Haven, CT 06513  
**203-777-3998**

**www.Keyfood.com**

## TWO CHAMBERS ARE HERE FOR YOUR BUSINESS!



Business Advocacy | Marketing & Promotion | Networking | Educational Forums  
Leadership Training | Event Sponsorship & Exposure | Public Policy



GNHCC.COM



**QUINNIPIAC**  
CHAMBER OF COMMERCE  
THE OFFICIAL CHAMBER FOR WALLINGFORD & NORTH HAVEN

**GET STARTED TODAY!** Contact: Gary Ciarleglio  
Regional Director Sales & Relationship Management  
gary@gnhcc.com, 203-782-4317



QUINNCHAM.COM







*Louis' Lunch*

## RESTAURANTS

Key:

- \$ average entree up to \$20
- \$\$ average entree \$21-\$29
- \$\$\$ average entree \$30 & up

**Hamilton Park**, The Blake Hotel, 9 High St., New Haven. 203-390-5192, hamiltonparkrestaurant.com \$\$

**Home**, 1114 Main St., Branford. 203-483-5896, homerestaurantct.com \$

**John Davenport's Restaurant**, Omni Hotel, 155 Temple St., New Haven. 203-974-6858, omnihotels.com \$\$\$

**K LaMay's Steamed Cheese-burgers**, 690 E. Main St., Meriden. 203-237-8326, klamayssteamed-cheeseburgers.com \$

**Katz's Restaurant & Deli**, 1658 Litchfield Tpk., Woodbridge. 203-389-5301, katzsdeli.net \$

**Louis' Lunch**, 261 Crown St., New Haven. 203-562-5507, louislunch.com \$

**The Marketplace at Guilford Food Center**, 77 Whitfield St., Guilford. 203-453-4849, marketplaceguilford.com \$\$

**Nataz Restaurant**, natazrest.com \$\$

- 1 W. Main St., Clinton. 203-664-5375
- 280 Branford Rd., North Branford. 203-315-0180

**Olmo Bagels**, 93 Whitney Ave., New Haven. 203-624-3373, olmobagels.com \$\$

**Sans Souci**, 2003 N. Broad St., Meriden. 203-639-1777, sanssoucirestaurant.com \$\$

**Stonebridge Restaurant**, 50 Daniel St., Milford. 203-874-7947, stonebridgerestaurant.com \$\$\$

**Tavern on State**, 969 State St., New Haven. 475-202-6883, tavernonstate.com \$\$

**Ted's Restaurant**, 1046 Broad St., Meriden. 203-237-6660, tedsrestaurant.com \$

**Three Sheets**, 372 Elm St., New Haven. 475-202-6909, linktr.ee/threesheetsnewhaven \$

**The Wharf**, 94 W. Wharf Rd., Madison. 203-350-0014, thewharfmadison.com \$\$

**Woodbridge Social**, 12 Selden St., Woodbridge. 203-553-9135, woodbridgesocial.com \$

**Zinc**, 964 Chapel St., New Haven. 203-624-0507, zincnewhaven.com \$\$

## COFFEE

**Koffee?**, 104 Audubon St., New Haven. 203-465-6244, koffeefamily.com \$

**Willoughby's Coffee and Tea**, willoughbyscoffee.com \$

- 550 E. Main St., Branford. 203-481-1700
- 752 Boston Post Rd., Madison. 203-245-1600
- 194 York St., New Haven. 203-789-8400
- 258 Church St., New Haven. 203-777-7400

## CHINESE

**Dumpling House**, 868 Boston Post Rd., Milford. 203-878-6666, dumplinghousemilford.com \$\$

**New Haven's Taste of China**, 954 Chapel St., New Haven. 203-745-5872, nhtasteofchina.com \$\$\$

## ETHIOPIAN

**Lalibela**, 176 Temple St., New Haven. 203-789-1232, lalibelact.com \$\$

## FRENCH

**Bar Bouchée**, 8 Scotland Ave., Madison. 203-318-8004, barbouchée.com \$\$



## Best of Food & Drink

### RESTAURANTS

Key:

\$ average entree up to \$20

\$\$ average entree \$21-\$29

\$\$\$ average entree \$30 & up

**Union League Café**, 1032 Chapel St., New Haven. 203-562-4299, unionleaguecafe.com **\$\$\$**

### GREEK

**Freskos**, 2323 Whitney Ave., Hamden. 203-823-9951, freskosgreek.com **\$\$**

**The Greek Spot Cafe & Grill**, 726 E. Broadway, Milford. 203-693-3970 **\$\$\$**

### GROCERY

**Bishop's Orchards & Winery**, 1355 Boston Post Rd., Guilford. 203-453-2338, bishopsorcharchs.com

**Key Food**, keyfood.com  
• 482 Greenwich Ave., New Haven. 203-773-8998  
• 325 Ferry St., New Haven. 203-777-3998

### INDIAN

**Coromandel**, 185 Boston Post Rd., Orange. 203-795-9055, coromandelorangepoint.com **\$\$**

**House of Naan**, 65 Howe St., New Haven. 203-562-6226, houseofnaan.com **\$\$**

**Lazeez**, 40 Orange St., New Haven. 203-780-8347, lazeezindiancuisine.com **\$**

**Sherkaan**, 65 Broadway, New Haven. 203-405-5808, sherkaan.com **\$**

### ITALIAN/ MEDITERRANEAN/PIZZA

**Apizza Grande Bethany**, 119 Amity Rd., Bethany. 203-859-5369, apizzagrandebethany.com **\$\$\$**

**BAR**, 254 Crown St., New Haven. 203-495-8924, barnightclub.com **\$**

**Bellini's Restaurant**, 2 Broadway Sq., North Haven. 203-234-2221, bellinisnorthhaven.com **\$\$\$**

**Café Allegre**, 725 Boston Post Rd., Madison. 203-245-7773, cafeallegre.com **\$\$\$**

**Da Legna at Nolo**, 687 State St., New Haven. 203-891-7704, jet2nolo.com **\$\$**

**Encore by Goodfellas**, 702 State St., New Haven. 203-785-8722, encorerestaurantct.com **\$\$\$**

**Ernie's Pizzeria**, 1279 Whalley Ave., New Haven. 203-387-3362 **\$**

**Frank Pepe Pizzeria Napoletana**, 157 Wooster St., New Haven. 203-865-5762, pepespizzeria.com **\$**

**Gusto Restaurant**, 255 Boston Post Rd., Milford. 203-876-7464, gustotrattoria.com **\$\$\$**



## EXPERIENCE ITALIAN FINE DINING AT L'ORCIO

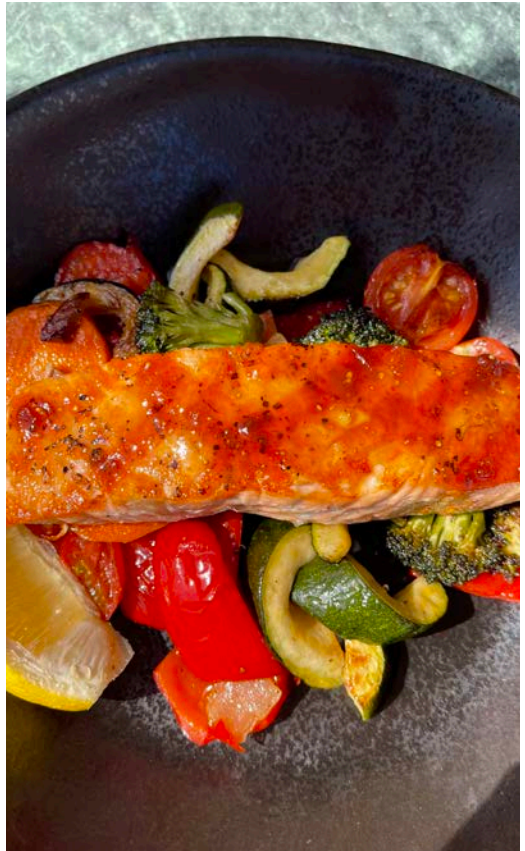
Head over to L'Orcio, an upscale Italian restaurant in New Haven, CT, and have a taste of savory and authentic dishes. Our food is crafted using only the freshest ingredients to ensure quality in everything that we serve. If you are interested in learning more, reach out to us today.



# L'ORCIO

(lorchō) is: A terra cotta urn used for storing olive oil.

806 STATE ST • NEW HAVEN, CT 06511  
203-777-6670 • LORCIO.COM



Caffe Bravo



## Best of Food & Drink

### RESTAURANTS

Key:

\$ average entree up to \$20

\$\$ average entree \$21-\$29

\$\$\$ average entree \$30 & up

**L'Orcio**, 806 State St., New Haven  
203-777-6670, lorcio.com **\$\$\$**

**La Luna Ristorante**, 168 N. Main St.,  
Branford. 203-483-9995,  
lalunact.com **\$\$\$**

**Lúdal**, 28-30 Broadway, North Haven.  
203-234-1814, ludalct.com **\$**

**Modern Apizza**, 874 State St.,  
New Haven. 203-776-5306,  
modernapizza.com **\$**

**Quattro's Italian Cuisine**,  
14 Water St., Guilford. 203-453-6575,  
quattrositalian.com **\$\$**

**Rawa**, 838 Whalley Ave., New Haven.  
203-691-5781, rawainc.com **\$\$**

**Rossitto's Ristorante**, 284 E. Main  
St., Branford. 203-483-7773,  
rossittos.com **\$\$**

**Sally's Apizza**, 237 Wooster St.,  
New Haven. 203-624-5271,  
sallysapizza.com **\$**

**Strega**, 9 River St., Milford.  
203-283-1849, stregamilford.com **\$**

**Villa Lulu**, 230 College St., New Haven.  
203-691-7177, villaluluct.com **\$\$**

**Zeneli Pizzeria & Cucina Napo-  
letana**, 138 Wooster St., New Haven.  
203-745-4194, zenelipizzeria.com **\$**

**Zuppardi's Apizza**, 179 Union Ave.,  
West Haven. 203-934-1949,  
zuppardisapizza.com **\$**

### JAPANESE/KOREAN

**Daiko Japanese Restaurant &  
Jerry-San's Sushi Bar**, 1 Jefferson  
Rd., Branford. 203-208-2169,  
jerrysansushi.com **\$**

**Hachiroku Shokudo & Sake Bar**,  
261 Orange St., New Haven.  
203-691-7984 **\$**



*Shell and Bones*

**Menya Gumi**, 165 Orange St.,  
New Haven. 203-535-0302,  
menya-gumi.com **\$\$**

**Midori**, 3000 Whitney Ave., Ste. 7,  
Hamden. 203-248-3322,  
midorihamdenonline.com **\$\$**

**Miso**, 15 Orange St., New Haven.  
203-848-6472, misorestaurant.com **\$\$**

**Rockfish Sushi Bar at East Rock  
Market**, 285 Nicoll St., New Haven.  
203-823-9148,  
eastrockmarket.com/rockfish **\$\$**

**Wasabi**, 350 Boston Post Rd., Orange.  
203-795-5856, wasabiorange.com **\$\$**

### LATIN AMERICAN/ SPANISH/CUBAN

**Bistro Basque**, 13 River St.,  
Milford. 203-878-2092,  
bistrobasqueusa.com **\$\$**

**La Isla**, 2779 Dixwell Ave., Hamden.  
203-891-5170, laislahamden.com **\$**

**Madeline's Empanaderia**, 86  
Spring St., New Haven. 475-227-6380,  
madelinesempanadas.com **\$**

**Olea**, 39 High St., New Haven. 203-  
780-8925, oleanewhaven.com **\$\$\$**

**Soul de Cuba**, 283 Crown St.,  
New Haven. 203-498-2822,  
souldecuba.com **\$\$**

### MEXICAN/SOUTHWEST

**Bubbakoo's Burritos**, 116 Boston  
Post Rd., Orange. 203-298-0745,  
bubbakoos.com **\$**

**Camacho Garage**, 36 Fountain St.,  
New Haven. 203-691-1969,  
camachogarage.com **\$\$**

**Don Rene Taqueria**, 50 S. Broad St.,  
Milford. 203-283-9191,  
donrenetaqueria.com **\$**

**Geronimo Bar & Grill**, 271 Crown  
St., New Haven. 203-777-7700,  
geronimobarandgrill.com **\$\$**

**Jalapeño Heaven**, 40 N. Main St.,  
Branford. 203-481-6759,  
jalapeno-heaven.com **\$**

### MIDDLE EASTERN

**Midpoint Istanbul Fine Dining**,  
245 Crown St., New Haven. 203-745-  
4741, midpointfinedining.com **\$\$**

**Saray Restaurant**, 770 Campbell  
Ave., West Haven. 203-937-0707,  
saraykebab.com **\$\$**

### STREET FOOD/TAKEOUT

**New Haven Street Food  
Districts**, Cedar St., Downtown New  
Haven, Long Wharf Dr., and Schem St.  
New Haven. streetfoodnhv.com **\$**,  
various cuisines

### SEAFOOD

**Atelier Florian**, 1166 Chapel St.,  
New Haven. 203-859-5999,  
atelierflorian.com **\$\$\$**

## Best of Food & Drink



Stowes

### RESTAURANTS

Key:

**\$** average entree up to \$20

**\$\$** average entree \$21-\$29

**\$\$\$** average entree \$30 & up

**Dino's Seafood**, 323 Washington Ave., North Haven. 203-239-5548, dinoseafood.com **\$**

**Dockside Restaurant**, 145 Block Island Rd., Branford. 203-488-3007, docksidebranford.com **\$** (seasonal)

**Donahue's Madison Beach Grille**, 1320 Boston Post Rd., Madison. 203-318-8362, donahuesmadisonbeachgrille.com **\$**

**Fair Haven Oyster Co.**, 307 Front St., New Haven. 203-745-5741, fairhavenoysterco.com **\$**

**Guilford Mooring**, 505 Whitfield St., Guilford. 203-458-2921, guilfordmooring.com **\$\$**

**The Lazy Lobster Restaurant**, 6 Broadway, Milford. 203-283-1864, thelazylobster.com **\$** (seasonal)

**Lenny's Indian Head Inn**, 205 S. Montowese St., Branford. 203-488-1500, lennysnow.com **\$\$**

**Lenny and Joe's Fish Tale**, 1301 Boston Post Rd., Madison. 203-245-7289, ljfishsale.com **\$**

**Lobster Shack**, 3 Cosey Beach Ave., East Haven. 203-483-8414, lobster shackct.com **\$**

**The Place**, 901 Boston Post Rd., Guilford. 203-453-9276, theplaceguilford.com **\$\$** (seasonal)

**Sandpiper Restaurant**, 161 Cosey Beach Ave., East Haven. 203-469-7544, sandpipereasthaven.com **\$\$** (seasonal)

**Shell and Bones**, 100 S. Water St., New Haven. 203-787-3466, shelland-bones.com **\$\$\$**

**Stowe's Seafood**, 347 Beach St., West Haven. 203-934-1991, stowesseafoodct.com **\$**

**Supreme Seafood Restaurant**, 999 Foxon Rd., North Branford. 203-484-2721, supremeseafood.net **\$\$**

**U.S.S. Chowder Pot III**, 560 E. Main St., Branford. 203-481-2356, chowderpot.com **\$\$**

**Westbrook Lobster Bar & Restaurant**, 300 Church St., Wallingford. 203-265-5071, westbrooklobster.com **\$\$**

### SOUTHERN

**Sandra's Next Generation**, 636 Congress Ave., New Haven. 203-787-4123, sandrasnextgeneration.com **\$**

### SWEETS

**Blazing Fresh Donuts**, 16 Church St., Guilford. 203-689-5330, blazingfreshdonuts.com **\$**

**Mew Haven Cat Café**, 904 Whalley Ave., New Haven. 475-441-7877, mewhavencatcafe.com **\$**

**Moon Rocks**, 2518 Whitney Ave., Unit D, Hamden. 203-404-4964, moonrocksgourmetcookies.com

**Neil's Donuts**, 83 N. Turnpike Rd., Wallingford. 203-269-4255, neilsdonuts.com **\$**

**Sugar Bakery**, 424 Main St., East Haven. 203-469-0815, thesugarbakery.com **\$**



## Best of Food & Drink

### RESTAURANTS

Key:

\$ average entree up to \$20

\$\$ average entree \$21-\$29

\$\$\$ average entree \$30 & up

**Sweet Cupcasons**, 394 New Haven Ave., Milford. 203-283-9455, sweetcupcasons.com \$

**Walnut Beach Creamery**, 17 Broadway #19, Milford. 203-878-7738, walnutbeachcreamery.com \$ (seasonal)

### THAI/SOUTHEAST ASIAN/ VIETNAMESE

**AyuThai**, 2548 Boston Post Rd., Guilford. 203-453-2988, ayuthaict.com \$

**Mecha Noodle Bar**, 201 Crown St., New Haven. 203-691-6971, mechanoodlebar.com \$

**Noa**, 200 Crown St., New Haven. 475-238-6290, noanewhaven.com \$

**Pad Thai Restaurant**, 1170 Chapel St., New Haven. 203-562-0322, padthainewhavenct.com \$

**Pho Ketkeo**, 21 Temple St., New Haven. 203-745-5480 \$

**September in Bangkok**, 754 State St., New Haven. 475-234-5239, septemberinbangkok.com \$

**Thai Stories Restaurant**, 16 Selden St., Woodbridge. 203-389-3363, thaistoriestrestaurant.com \$

**Tibetan Kitchen**, 1217 Chapel St., New Haven. 860-759-5465, tibetankitchen.us \$

### VEGETARIAN

**Arles & Boggs Vegan Eatery**, 100 Quinipiac St., Wallingford. 203-741-9186, arlesandboggs.com \$

**Caribbean Style Vegan**, 89 George St., New Haven. 203-787-9703, caribbeanstylevegan.com \$



*Claire's Corner Copia*

**Claire's Corner Copia**, 1000 Chapel St., New Haven. 203-562-3888, claires-cornercopia.com \$

**Wild Alchemy Café**, 600 N. Colony Rd., Wallingford. 203-265-5000, purealchemyjuice.com \$\$



*Paradise Hills*  
VINEYARDS

**WELCOME TO PARADISE.** Established in 1997, Paradise Hills is a family-owned and operated winery nestled among 65 acres of rolling hills along the Washington Trail in Wallingford, CT. The Ruggiero family looks forward to welcoming you to our Tuscan-inspired winery. Open year-round Monday - Saturday 11am-8pm, Sunday 11am-6pm. Live music Friday and Sunday.

15 WIND SWEEP HILL ROAD, WALLINGFORD • 203-284-0123 • PARADISEHILLSVINEYARD.COM

## Best of Food & Drink



### The Shops at Yale - Dining, [theshopsatyale.com](http://theshopsatyale.com)

*Union League Café, The Shops at Yale*

#### RESTAURANTS

Key:

\$ average entree up to \$20

\$\$ average entree \$21-\$29

\$\$\$ average entree \$30 & up

**Anchor Spa**, 272 College St., New Haven. 203-821-7065, [anchorspa.com](http://anchorspa.com) \$\$, American/Continental

**Arethusa Farm Dairy**, 1020 Chapel St., New Haven. 203-390-5114, [arethusafarm.com](http://arethusafarm.com) \$, Ice Cream/Frozen Yogurt

**Ashley's Ice Cream**, 280 York St., New Haven. 203-776-7744, [ashleysicecream.net](http://ashleysicecream.net) \$, Ice Cream/Frozen Yogurt

**Atticus Bookstore & Café**, 1082 Chapel St., New Haven. 203-776-4040, [atticusnhv.com](http://atticusnhv.com) \$, American/Continental

**B-Natural Kitchen and Bar**, 260 College St., New Haven. 203-821-7093, [bnaturalkitchen.com](http://bnaturalkitchen.com) \$, American/Continental

**Book Trader Café**, 1140 Chapel St., New Haven. 203-787-6147, [booktrader-cafe.net](http://booktrader-cafe.net) \$, American/Continental

**Bulldog Hotdogs**, 56 Broadway, New Haven. 203-497-6161

**Claire's Corner Copia**, 1000 Chapel St., New Haven. 203-562-3888, [clairescornercopia.com](http://clairescornercopia.com) \$, Vegetarian

**Common Grounds**, 276 York St., New Haven. [commongrounds.com](http://commongrounds.com) \$, Coffee/Tea House

**Donut Crazy**, 290 York St., New Haven. 203-745-4149, [donutcrazy.com](http://donutcrazy.com) \$, Bakery

**Good Nature Market**, 15 Broadway, New Haven. 203-787-4533 \$, American/Continental

**Gran Gusto**, 278 Park St., New Haven. Italian

**Harvest Wine Bar & Restaurant**, 1104 Chapel St., New Haven. 203-777-2500, [harvestwinebar.com](http://harvestwinebar.com) \$\$, American/Continental

**Heirloom at The Study**, 1157 Chapel St., New Haven. 203-503-3919, [heirloomnewhaven.com](http://heirloomnewhaven.com) \$\$\$, American/Continental

**J&B Deli**, 1147 Chapel St., New Haven. 203-773-0709, [jandbdeli.com](http://jandbdeli.com) \$, American/Continental

**The Juice Box**, 1092 Chapel St., New Haven. 203-562-0068, [juiceboxnewhaven.com](http://juiceboxnewhaven.com) \$, Vegetarian

**Loose Leaf Boba Company**, 46 High St., New Haven. 203-777-4040, [bobacompany.com](http://bobacompany.com) \$, Coffee/Tea House

**Maison Mathis**, 304 Elm St., New Haven. 203-752-9779, [mm-yale.com](http://mm-yale.com) \$, American/Continental





*Sherkaan, The Shops at Yale*

**Midpoint Istanbul**, 245 Crown St., New Haven. 203-745-4741, midpoint-finedining.com **\$\$**, Middle Eastern

**Nice Day Chinese**, 316 Elm St., New Haven. Chinese

**Old Heidelberg at Graduate New Haven**, 1151 Chapel St., New Haven. 475-207-7070, graduatehotels.com/new-haven **\$**, American/Continental

**Pacífico**, 220 College St., New Haven. 203-772-4002, pacificonewhaven.com **\$\$\$**, Latino/Spanish/Puerto Rican/Colombian/Cuban

**Pedals**, 284 York St., New Haven. 485-655-2105, drinkpedals.com **\$**, Vegetarian

**Philly's A Taste of Philadelphia**, 1008 Chapel St., New Haven. 203-823-9315, eatcheesesteak.com **\$**, American/Continental

**Pokémoto Hawaiian Poké**, 1145 Chapel St., New Haven. 203-691-6545, pokemoto.com **\$**, Hawaiian

**Shake Shack**, 986 Chapel St., New Haven. 203-747-8483, shakeshack.com **\$**, American/Continental

**Sherkaan Indian Street Food**, 658 Broadway, New Haven. 203-405-5808, sherkaan.com **\$\$**, Indian

**South Bay**, 228 College St., New Haven. 475-241-3996, southbayct.com **\$\$**, Mediterranean

**Strega**, 1006 Chapel St., New Haven. (opening summer 2023)

**Sushi on Chapel**, 1022 Chapel St., New Haven. 203-776-4200, sushi-on-chapel.business.site **\$\$**, Japanese/Korean

**Tomatillo Taco Joint**, 320 Elm St., New Haven. 203-782-6000, tomatillo-tacojoint.com **\$**, Mexican

**Tropical Smoothie Café**, 15 Dixwell Ave., New Haven. 203-691-5428, tropicalsmoothiecafe.com **\$**

**Union League Café**, 1032 Chapel St., New Haven. 203-562-4299, union-leaguecafe.com **\$\$\$**, French

**Villa Lulu**, 230 College St., New Haven. 203-691-7177, villaluluct.com **\$\$\$**, Mediterranean

**Willoughby's Coffee & Tea**, 194 York St., New Haven. 203-789-8400, willoughbyscoffee.com **\$**, Coffee/Tea House

**Yamasaki Teriyaki**, 9 Dixwell Ave., New Haven. 203-780-8891, yamasakiteriyaki.com **\$**, Japanese/Korean

**Yorksides Pizza and Restaurant**, 288 York St., New Haven. 203-787-7471, yorksidepizza.com **\$**, Italian/Mediterranean/Pizza

**ZINC New Haven**, 964 Chapel St., New Haven. 203-624-0507, zincnewhaven.com **\$\$\$**, American/Continental

## Best of Food & Drink



### Farms & Wineries

*Clover Nook Farm*

**Bishop's Orchards & Winery**, 1355 Boston Post Rd., Guilford. Since 1871, Bishop's has been serving Connecticut with the best possible farm products. The Farm Market and Winery are open year-round—seasonal pick-your-own fruits and entertainment. 203-453-2338; PYO Hotline 203-458-PICK, [bishopsorchards.com](http://bishopsorchards.com)

**Blue Hills Orchards**, 141 Blue Hills Rd., Wallingford. 203-269-3189, [bluehillsorchard.com](http://bluehillsorchard.com)

**Buttermilk Lane Farm**, 870 Garden Rd., Orange. 203-891-9128

**Chamard Vineyards**, 115 Cow Hill Rd., Clinton. 860-664-0299, [chamard.com](http://chamard.com)

**Clover Nook Farm**, 50 Fairwood Rd., Bethany. 203-393-2929, [clovernookfarm.com](http://clovernookfarm.com)

**Glendale Farms**, 203 Herbert St., Milford. 203-874-7203, [glendalefarms.com](http://glendalefarms.com)

**Gouveia Vineyards**, 1339 Whirlwind Hill Rd., Wallingford. 203-265-5526, [gouveiavineyards.com](http://gouveiavineyards.com)

**Hindinger Farm**, 835 Dunbar Hill Rd., Hamden. 203-288-0700, [hindingersfarm.com](http://hindingersfarm.com)

**Lyman Orchards**, 32 Reeds Gap Rd., Middlefield. 860-349-6000 (main) 860-349-6015 (PYO), [lymanorchards.com](http://lymanorchards.com)

**Paradise Hills Vineyard & Winery**, 15 Wind Swept Hill Rd., Wallingford. The intimate Tuscan-styled tasting room, hand-crafted copper bar, decorative chandeliers, and mahogany tables provide a romantic setting to relax in the countryside with a fine glass of wine. Paradise's Notte di Amore has received a gold medal at the World Wine Championships, designating it as an exceptional wine. Open year-round. 203-284-0123, [paradisehillsvineyard.com](http://paradisehillsvineyard.com)

**Rosabianca Vineyard & Winery**, 1536 Middletown Ave., Northford. 203-208-1211, [rosabiancavineyards.com](http://rosabiancavineyards.com)

**Rose Orchards Farm**, 33 Branford Rd., North Branford. 203-488-7996, [roseorchardsfarm.com](http://roseorchardsfarm.com)

**Rose Vineyard & Winery**, 2 Valley Rd., North Branford. 475-221-8636, [rosevineyards.com](http://rosevineyards.com)

**Savino Vineyards**, 128 Ford Rd., Woodbridge. 203-389-2050

**Stappa Vineyard**, 403 Derby Ave., Orange. 203-795-1795, [stappavineyard.com](http://stappavineyard.com)

**Sunflower Farm**, 767 Derby Milford Rd., Orange. 203-795-6829

**Treat Farm**, 361 Old Tavern Rd., Orange. 203-799-2453, [treat.farm](http://treat.farm)

## Thimble Islands Cruise

**SEA MIST**

**We are accepting private charter reservations!**

**Tours begin first weekend of May.**

Go To <https://thimbleislandcruise.com/>

🚢 Online To Book a Tour 🚢

Call 203-488-8905 To

🚢 Book a Charter 🚢



## Breweries

**Armada Brewing**, 190 River St., New Haven. [armadabeer.com](http://armadabeer.com)

**BAR/BruRm**, 254 Crown St., New Haven. 203-495-8924, [barnightclub.com](http://barnightclub.com)

**Bear's Smokehouse at the Stack**, 470 James St., New Haven. 203-350-9060, [bearsbbq.com/new-haven](http://bearsbbq.com/new-haven)

**The Beeracks/Armada Brewing/Hoax Brewing/Hull's Brewing Company/New Haven Nighthawks Brewing/Overshores Brewing**, 250 Bradley St., East Haven. 203-909-6224, [thebeeracks.com](http://thebeeracks.com)

**Caius Farm Brewery**, 101 North Branford Rd., Branford. 203-433-4660, [caiusfarmbrewery.com](http://caiusfarmbrewery.com)

**Center Street Brewing Company**, 24 Wallace Ave., Wallingford. 203-626-9056, [centerstreetbrewing.com](http://centerstreetbrewing.com)

**Cliffside Brewing**, 16B Center St., Wallingford. [cliffsidebrewing.com](http://cliffsidebrewing.com)

**Dockside Brewery and Waterfront Biergarten**, 40 Bridgeport Ave., Milford. 203-693-3900, [docksidebrewery.com](http://docksidebrewery.com)

**DuVig Brewing Company**, 59 School Ground Rd. Ste. 10, Branford. 475-338-1938

**East Rock Brewing Company & Beer Hall**, 285 Nicoll St., New Haven. 475-234-6176, [eastrockbeer.com](http://eastrockbeer.com)

**Front Porch Brewing**, 226 N. Plains Industrial Rd. Unit 4, Wallingford. 203-793-7736, [frontporchbrewing.org](http://frontporchbrewing.org)

**Milford Point Brewing**, 230 Woodmont Rd. #29B, Milford. 203-701-9077, [milfordpointbrewing.com](http://milfordpointbrewing.com)

**New England Brewing Company**, 175 Amity Rd., Woodbridge. 203-387-2222, [newenglandbrewing.com](http://newenglandbrewing.com)

**No Worries Brewing Company**, 2520 State St., Hamden. 203-691-6662, [noworriesbeer.com](http://noworriesbeer.com)

**Southport Brewing Company (SBC)**, 33 New Haven Ave., Milford. 203-874-2337, [sbcrestaurants.com](http://sbcrestaurants.com)

**Stewards of the Land Brewery**, 418 Forest Rd., Northford. [stewardsoft-helandbrewery.com](http://stewardsoft-helandbrewery.com)

**Stony Creek Brewery**, 5 Indian Neck Ave., Branford. 203-433-4545, [stonymcreekbeer.com](http://stonymcreekbeer.com)

**Thimble Islands Brewing Company**, 16 Business Park Dr., Branford. 203-208-2827, [thimbleislandbrewery.com](http://thimbleislandbrewery.com)

**Tribus Beer Company**, 100 Raton Dr., Milford. 203-693-2299, [tribusbeer.co](http://tribusbeer.co)

**Twelve Percent Beer Project/Skygazing Brewing Company**, 341 State St., North Haven. 203-745-3983, [twelvepercentbeerproject.square.site](http://twelvepercentbeerproject.square.site)

## Best of Food & Drink



## Town Green District

Keeping Downtown New Haven a vibrant and exciting place to live, work, learn and play.



**Town Green District**  
Downtown New Haven



@DowntownNHV

# Things To Do



*Sleeping Giant State Park, Hamden*

## OUTDOOR ADVENTURES

If you love the outdoors, prepare for paradise: hiking, biking, swimming, kayaking, and tours.

### PARKS & TRAILS

**East Rock Park**, 41 Cold Spring St., New Haven. 425 acres, featuring the historic Soldiers & Sailors Monument, The park offers over 10 miles of hiking trails, a view of Long Island Sound, and access to the Pardee Rose Garden. Dawn to dusk. 203-946-6086, [newhavenct.gov](http://newhavenct.gov)

**Farmington Canal Linear Park**, New Haven/Hamden. More than 16 scenic miles of walkway perfect for biking, walking, hiking, and in-line skating, beginning in Hamden and continuing south into New Haven. Parking is available on Todd St., Sherman Ave., and Brooksville Ave. The full trail is approximately 84 miles and extends into Massachusetts. Dawn to dusk. 203-287-2579, [farmingtoncanal.org](http://farmingtoncanal.org)

**Hubbard Park and Castle Craig**, 999 West Main St., Meriden. 1,800-acre park includes a lake, tennis courts, a pavilion, swings, and a playground for younger children. Castle Craig is a replica of an ancient castle resting 1,002 feet above sea level. 203-630-4259, [meridenct.gov/city-services/parks-and-recreation/hubbard-park/](http://meridenct.gov/city-services/parks-and-recreation/hubbard-park/)

**Powder Ridge Mountain Park & Resort**, 99 Powder Hill Rd., Middlefield. This urban mountain sports park and resort features skiing, snowboarding, tubing, mountain biking, and synthetic snow adventures for all ages. Dining is available at Fire at The Ridge and The Marketplace. 860-349-3454, [powderridgepark.com](http://powderridgepark.com)

**Sleeping Giant State Park**, 200 Mt. Carmel Ave., Hamden. Two miles of mountaintop, with a 1.5-mile scenic trail leading to the peak of Mt. Carmel and observation tower, provides an excellent view of Long Island Sound and the New Haven area. The park offers 32 miles of hiking trails and picnic areas. 8 a.m.-sunset. [portal.ct.gov/deep](http://portal.ct.gov/deep)

**SCRCOG Regional Trails**, Over 100 trails with maps and information available, including a map of the trail(s), descriptive information, directions, parking information, permitted uses, and contact information. [scrcog.org/regional-planning/regional-trails](http://scrcog.org/regional-planning/regional-trails)

### BOATING

If you want something to float your boat, we have great options for exploring Long Island Sound and the shoreline. Three public boat tours (approximately 45 minutes) are available to view the Thimble Islands off Branford's coast, and several private charter companies are along the shoreline. You can also take a more hands-on approach with a kayak rental.

**Branford River Paddlesports**, 50 Maple St., Branford. Offers paddleboard and kayak rentals, tours, and lessons. 203-980-8451, [branfordriverpaddlesports.com](http://branfordriverpaddlesports.com)

**Canal Dock Boathouse**, 475 Long Wharf Dr., New Haven. Canal Dock offers dragon boat and rowing clubs, indoor rowing and fitness, and educational rowing courses. [canaldock.org](http://canaldock.org)

**The Islander Thimble Island Tours**, Stony Creek, Branford. Relax, see the sites, and learn the unique history of the Thimbles Islands on a 45-minute narrated tour. Seasonal. 203-433-2233, [thimbleislander.weebly.com](http://thimbleislander.weebly.com)



## Things To Do

**Pedal Cruise Connecticut**, Milford Harbor, Milford. This 90-minute, relaxing & breezy excursion takes you out on Long Island Sound with 12 pedal stations that propel the rear paddle. 877-777-9322, [pedalcruise.com](http://pedalcruise.com)

**Quinnipiac River Marina**, 309 Front St., New Haven. Rent a kayak to explore the Quinnipiac River—boat access to Long Island Sound. 203-777-3625, [quinnipiacrivermarina.com](http://quinnipiacrivermarina.com)

**Scoot & Paddle**, 28 Naugatuck Ave., Milford. Kayak, stand-up paddleboard, motorized scooter rentals, lessons, group tours, and more. 203-713-8282, [scootandpaddle.com](http://scootandpaddle.com)

**Thimble Island Cruises - Sea Mist**, Stony Creek, Branford. A 45-minute narrated tour around the picturesque Thimble Islands. Seasonal. 203-488-8905, [thimbleislandcruise.com](http://thimbleislandcruise.com)

**Thimble Island Cruises - Volsunga IV**, Stony Creek, Branford. Take a memorable 45-minute ride through the picturesque Thimble Islands. Seasonal. 203-481-3345, [thimbleislands.com](http://thimbleislands.com)

## BEACHES

The shoreline offers a host of activities, including swimming, sunbathing, birding, biking, jogging, and fishing. **Hammonasset Beach State Park** (Madison), the state's largest shoreline park, offers over 2 miles of beach and 550 grassy campsites. All towns along the shoreline have prime beach access. Check with the town's Parks & Recreation department for regulations and fees.

**Anchor Beach**, 136 Beach Ave., Milford. A small, sandy beach in the Borough of Woodmont. Rock outcroppings and small islands on the sound make this a scenic viewpoint. 203-783-3280

**Branford Town Beach**, Harbor St., Branford. The beach is in the south-central part of town at the end of Harbor Street. The beach is open to the public until dusk. 203-488-8304

**East Haven Town Beach**, Cosey Beach Ave., East Haven. A sandy beach with a picnic area. Bocci ball and beach volleyball courts. There are showers and a pavilion. Parking fee. 203-468-3250

**East Wharf Beach**, East Wharf Rd. and Middle Beach Rd., Madison. Approximately 1.8 acres in size, this beach features a walking/fishing pier and a former shipbuilding site on Long Island Sound. 203-245-5623

**Gulf Beach**, Gulf St., Milford. 203-783-3280

**Hammonasset Beach State Park**, 1288 Boston Post Rd., Madison. A visit to Hammonasset Beach State Park is more than just another day at the beach. Connecticut's largest shoreline park offers over 2 miles of beach to enjoy swimming,



*Connecticut Pedal Cruise, Milford*

strolling along the boardwalk, or just relaxing in the sun and surf. Daily 8 a.m.-sunset. 203-245-2785

**Jacob's Beach**, Seaside Ave., Guilford. 25-acre beach on Long Island Sound with a playground, boardwalk, volleyball, basketball, outdoor showers, and more. Daily fee. 203-458-8068

**Lighthouse Point Park**, 2 Lighthouse Rd., New Haven. Swimming, natural history displays, nature trails, a picnic grove, a bird sanctuary, and an antique carousel are highlights of this 82-acre park on Long Island Sound. Seasonal. Gates open 7 a.m.-sunset year-round. Carousel, weekends & holidays noon-4 p.m. Out-of-state parking fees. 203-946-8019

**Silver Sands State Park**, 1 Silver Sands Pkwy., Milford. Beach-goers see Charles Island from the shore, where legend has it that Captain Kidd buried treasure. Take a stroll along the boardwalk. 203-735-4311

**Walnut Beach**, East Broadway, Milford. Walnut Beach features sand for sunbathers and a pier for fishing. 203-783-3280

**West Wharf Beach**, West Wharf Rd., Madison. Approximately 1.8 acres in size, West Wharf Beach was once a shipbuilding site on Long Island Sound. 203-245-5623

**West Haven Town Beaches**, Captain Thomas Blvd., West Haven. West Haven prides itself on being home to the longest stretch of publicly accessible shoreline in Connecticut. The city's 3-mile beach on Long Island Sound comprises 25% of the state's public beaches. 203-937-3651

## NIGHTLIFE

Sundown serves up a whole new side of Greater New Haven. New Haven's downtown pulses with live entertainment for all ages and tastes. Westville Music Bowl has joined Toad's Place, Café Nine, College Street Music Hall, and Firehouse 12 as the core of the music scene. Music aficionados also enjoy the music of classical legends

## Things To Do



College Street Music Hall, New Haven



PEZ Visitors Center, Orange

at Yale University School of Music throughout the academic year. Space Ballroom is just around the corner in Hamden, offering craft beers and small music shows of various genres.

**1928 Cocktail Club**, 1016-1018 Main St., Branford. 1928ct.com

**Café Nine**, 250 State St., New Haven. 203-789-8281, cafenine.com

**College Street Music Hall**, 238 College St., New Haven. 203-867-2000, collegestreetmusichall.com

**Firehouse 12**, 45 Crown St., New Haven. 203-785-0468, firehouse12.com

**The Owl Shop**, 268 College St., New Haven. 203-624-3250, owlshopcigars.com

**Space Ballroom**, 295 Treadwell St., Hamden. spaceballroom.com

**Toad's Place**, 300 York St., New Haven. 203-624-8623, toadsplace.com

**Toyota Oakdale Theatre**, 95 South Turnpike Rd., Wallingford. 203-265-1501, livenation.com

**Trinity Bar & Restaurant**, 157 Orange St., New Haven. 203-495-7736, thetrinitybar.com

**Westville Music Bowl**, 45 Yale Ave., West Haven. westvillemusicbowl.com

### TOURS

The best way to tour New Haven is on foot. Since New Haven's and Yale University's histories are thoroughly intertwined, the Yale University Campus Tour is a great way to discover the city's past and present. This free tour highlights history, art, architecture, and student life. Or try pedaling around down-

town on the Elm City Party Bike, a fun, social and relaxing way to see the city while bar and restaurant hopping. With arts, culinary, fitness, and even ghost tours, there is a unique way for everyone to enjoy this vibrant city.

**CT Bike Tours**, Guilford. A leisurely three-hour, 20-mile guided bike tour (with van support) along the Connecticut shoreline on quiet roads combined with a 45-minute boat tour of the Thimble Islands. 203-856-7263, ctbiketours.com.

**Elm City Party Bike**, New Haven. New England's only pedal-powered bar & sightseeing tour experience! A fun, social & relaxing way to see the city, bar & restaurant hop while exercising. Public and private tours are available. 888-971-3272, elmcitypartybike.com

**Fitstyle Walking Tour by Shana**, New Haven. Explore Yale and Downtown New Haven in 5,000 steps! See the city and find time for exercise with this moderately paced walk. It takes approximately 60 minutes and covers 2.5 to 3 (mostly flat) miles. Seasonal. fitstylebyshana.com

**Pedal Cruise**, see Boating.

**PEZ Visitor Center**, 35 Prindle Hill Rd., Orange. See and experience the PEZ brand in person. Over 4,000 square feet dedicated to all things PEZ! Fees. Self-guided tours. 203-298-0201, pez.com

**Taste of New Haven**, New Haven. Provides walking culinary tours, cooking classes, and pizza crawls in New Haven. Experienced tour guides lead guests on foodie adventures that show off the city's rich culture and history. Public and private tours are available. 888-975-8664, tasteofnewhaven.com

**Thimble Island Cruises**, see Boating.

**Walk New Haven's Historic Cultural Neighborhoods**, New Haven. Download maps created by The Ethnic Heritage Center for the Downtown, Wooster Square, Lower Dixwell, and Downtown North neighborhoods. 203-392-6126, walknewhaven.org



## Things To Do

**Yale Campus Tours**, Yale Visitor Center, 149 Elm St., New Haven. Student-led walking tours of Yale Campus last 1 hour and 15 minutes, covering history, architecture, and student life. Visitors see the Old Campus, several residential colleges, Sterling Memorial Library, Beinecke Library, and more. See the website for the current tour schedule. Fees and reservations for groups are required two weeks before the tour. 203-432-2300, [visitorcenter.yale.edu](http://visitorcenter.yale.edu)

**Yale University Art Gallery**, 1111 Chapel St., New Haven. FREE and open to the public. Offers public, private group, and school tours with reservations. Visit the website for details and hours. 203-432-0600, [artgallery.yale.edu](http://artgallery.yale.edu)

**Yale University Art Gallery American Furniture Study Center**, 900 West Campus Dr., West Haven. Join us on the first Friday of the month for a one-hour, in-person tour at the Collection Studies Center, Yale West Campus. See more than 1,300 examples of American furniture and clocks in this facility from the 17th century to the present. Registration is required. 203-432-0632

### NEARBY ATTRACTIONS

**Connecticut Science Center**, 250 Columbus Blvd., Hartford. With more than 165 hands-on exhibits, a state-of-the-art 3D digital theater, four educational labs, and daily programs and events, the Connecticut Science Center offers endless exploration for children, teens, and adults. From physics to forensics, geology to astronomy, visitors have the sciences at their fingertips. 203-724-3623, [ctsciencecenter.org](http://ctsciencecenter.org)

**Foxwoods Casino**, 350 Trolley Line Blvd., Ledyard. Foxwoods Resort Casino features deluxe accommodations, fine dining, a wide variety of entertainment, attractions, and shopping at Tanger Outlets. It is the largest resort casino in North America. 860-312-3000, [foxwoods.com](http://foxwoods.com)

**Mashantucket Pequot Museum & Research Center**, 110 Pequot Trail, Ledyard. The museum brings to life the story of the Mashantucket Pequot Tribal Nation. It is a significant resource on the histories and cultures of Native Americans in the northeast and the region's rich natural history. 860-396-6910, [pequotmuseum.org](http://pequotmuseum.org)

### GROUP TOUR/MEETINGS

New Haven's compact downtown is the perfect stop on your New England getaway. As the fourth most walkable city in the U.S., your guests will thank you for the opportunity to stretch their legs. Not to worry if members of your group have a wide range of interests, guests can venture out to explore the history, appreciate art, shop to their hearts' content, or savor delicious food.

**Canal Dock Boathouse**, 475 Long Wharf Dr., New Haven. Premier event spaces overlooking New Haven harbor for 60 to 300 people. 203-946-6383, [canaldock.org](http://canaldock.org)

**ConneCTions Group Tours**, Out-of-the-ordinary tours for groups. Customized or signature escorted local historical, cultural, special interest, highlights programs, ½ to multi-day receptive tours, and group itineraries. 203-656-0207, [connectionsgroutours.com](http://connectionsgroutours.com)

**Maurice R. Greenberg Conference Center**, 391 Prospect St., New Haven. Located steps from New Haven's vibrant downtown, Yale University's Greenberg Conference Center is the perfect place for your next event. Designed to accommodate various activities, from conferences and corporate retreats to receptions and dinners. 203-436-5866, [greenberg.yale.edu](http://greenberg.yale.edu)

**Visit New Haven**, 28 Orange St., New Haven. We are happy to inform visitors about Greater New Haven's attractions, lodgings, and events. We can assist in developing your group tour or provide meeting or group services. (Fees apply for select services). 203-777-8550, [visitNewHaven.com](http://visitNewHaven.com)

**Yale University Conference Services**, 55 Whitney Ave. #470, New Haven. Provides conference, event, and program support services. A "One Stop Shop" for your meeting needs. Includes the development, promotion, and financial administration of meetings, seminars, summer programs/housing, and conferences on the Yale campus. 203-432-0465, [conference-sandevents.yale.edu](http://conference-sandevents.yale.edu)

## Take your next step toward a thriving independent adult life!

Chapel Haven Schleifer Center is an award-winning transition program and lifelong community devoted to independent lives for adults with social and developmental disabilities.

Check out our programs and learn more about our mission at [www.chapelhaven.org](http://www.chapelhaven.org)



HARTFORD CONNECTICUT  
MEDIA GROUP



For additional information, contact:  
Christy Chandler, Director of Admissions  
[cchandler@chapelhaven.org](mailto:cchandler@chapelhaven.org) or 203.397.1714, x185



Find Chapel Haven Schleifer Center on Facebook

# Annual Events 2023



*St. Patrick's Day Parade, New Haven, Full Send Productions/Market New Haven*

## SPRING

### **New Haven Restaurant Week**

April 16-21, 2023  
[infonewhaven.com](http://infonewhaven.com)

### **Cherry Blossom Festival, New Haven**

April 16, 2023  
[historicwoostersquare.org](http://historicwoostersquare.org)

### **Annual Meriden Daffodil Festival**

April 29 & 30, 2023  
[daffodilfest.com](http://daffodilfest.com)

### **International Festival of Arts & Ideas, New Haven**

June 10-25, 2023  
[artidea.org](http://artidea.org)

### **Branford Festival & Road Race**

June 16-18, 2023  
[branfordfestival.com](http://branfordfestival.com)

## SUMMER

### **Guilford Art Center Craft EXPO**

July 14-16, 2023  
[guilfordartcenter.org/expo](http://guilfordartcenter.org/expo)

### **Shoreline Jewish Festival, Guilford**

Early August  
[jewishshoreline.org](http://jewishshoreline.org)

### **Orange Volunteer Firemen's Carnival**

August 3-6, 2023  
[orangevfd.org](http://orangevfd.org)

### **North Branford Annual Potato and Corn Festival**

August 4-6, 2023  
[nbpotatofest.com](http://nbpotatofest.com)

### **Milford Oyster Festival**

August 19, 2023  
[milfordoysterfestival.com](http://milfordoysterfestival.com)

### **Odyssey: A Greek Festival, Orange**

September 1-4, 2023  
[saintbarbara.org](http://saintbarbara.org)

### **Annual Faxon Law New Haven Road Race**

September 4, 2023  
[newhavenroadrace.org](http://newhavenroadrace.org)

### **North Haven Fair**

September 7-10, 2023  
[northhaven-fair.com](http://northhaven-fair.com)

### **New Haven Grand Prix and Apizza Feast**

Mid-Late September  
[newhavengp.com](http://newhavengp.com)

### **The Guilford Fair**

September 15-17, 2023  
[guilfordfair.org](http://guilfordfair.org)

### **The Durham Fair**

September 21-24, 2023  
[durhamfair.com](http://durhamfair.com)

## AUTUMN/HOLIDAY

**Open Source, New Haven**  
[artspacenewhaven.org](http://artspacenewhaven.org)

### **New Haven Restaurant Week**

November 5-10, 2023  
[infonewhaven.com](http://infonewhaven.com)

### **Annual Crèche Exhibit at the Blessed Michael McGivney Pilgrimage Center, New Haven**

November-January  
[michaelmcgivneycenter.org](http://michaelmcgivneycenter.org)

### **Guilford Art Center Artistry Holiday Sale of Fine Craft & Art**

Mid November-December  
[guilfordartcenter.org](http://guilfordartcenter.org)

### **Fantasy of Lights, New Haven**

Late November-Early January  
[goodwillsne.org/fantasyoflights](http://goodwillsne.org/fantasyoflights)

### **Festival of Silver Lights at Hubbard Park, Meriden**

Late November-Early January  
[meridentc.gov](http://meridentc.gov)

### **Winter Wonderland & Santa at the Shore Line Trolley Museum, East Haven**

Weekends, December  
[shorelinetrolley.org](http://shorelinetrolley.org)

## WINTER

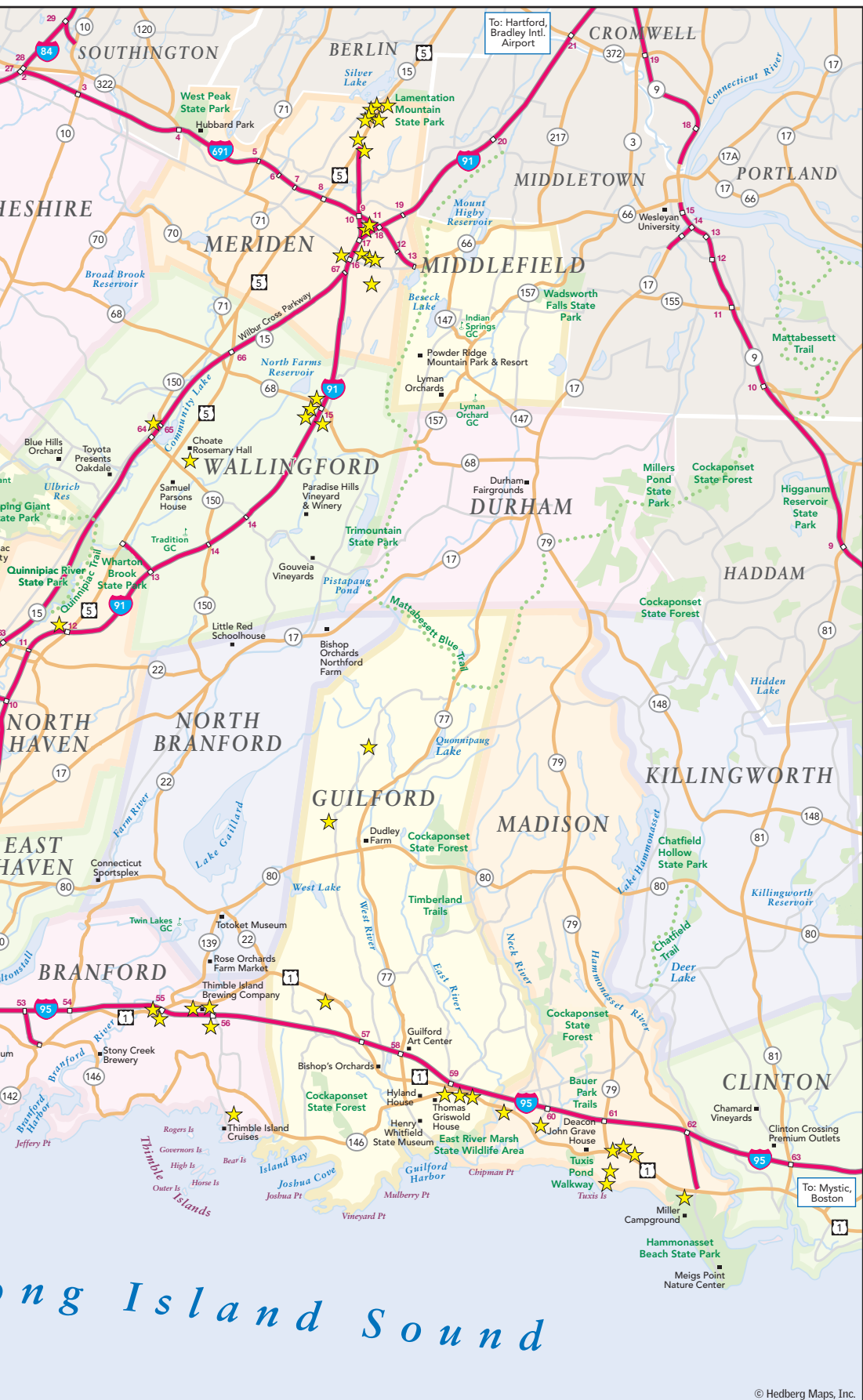
### **Walter Camp National Awards Weekend, New Haven**

[waltercamp.org](http://waltercamp.org)




### **St. Patrick's Day Parades, Milford & New Haven**

Mid March  
[stpatrikssdayparade.org](http://stpatrikssdayparade.org)

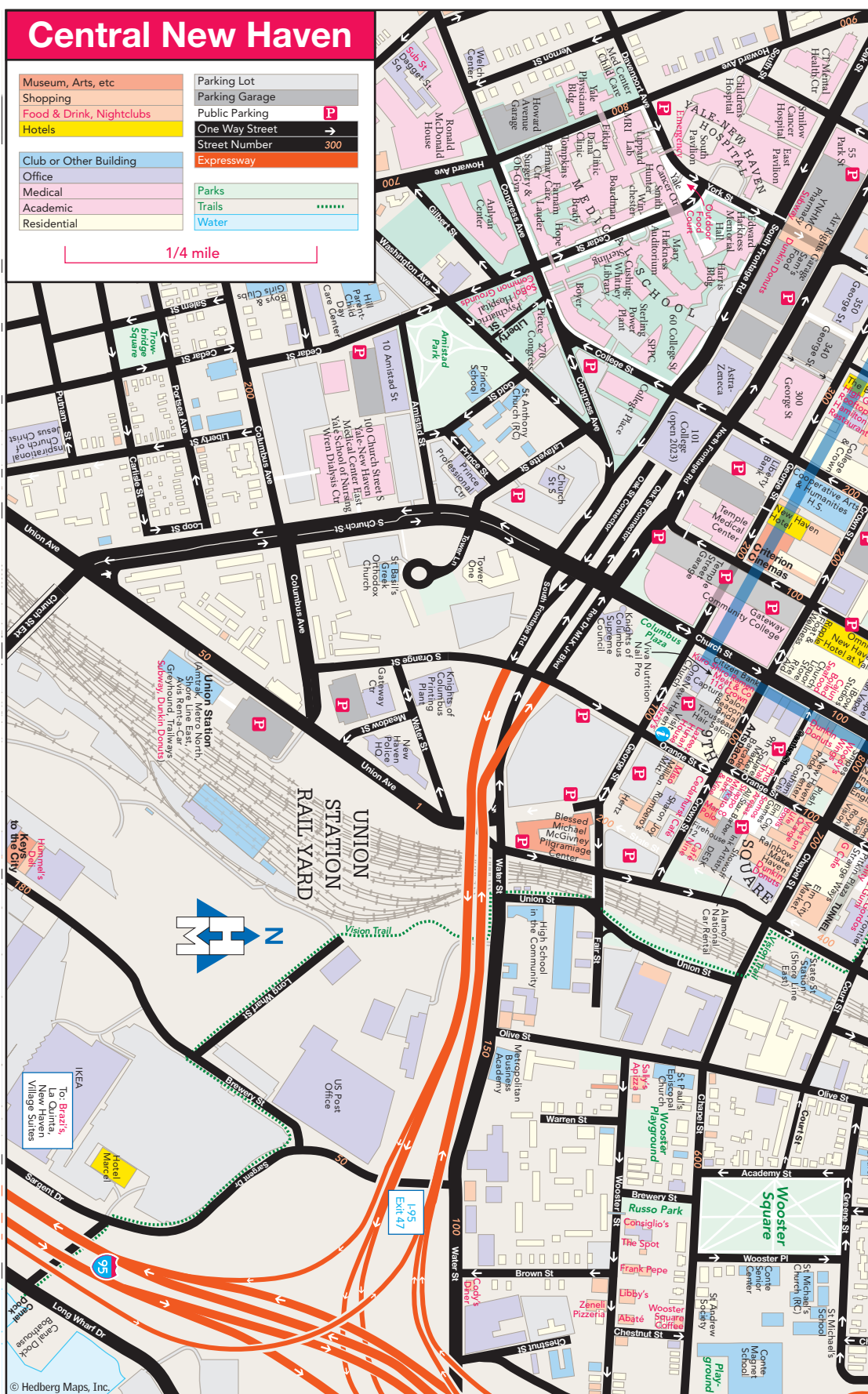




# Central New Haven

|                          |  |
|--------------------------|--|
| Museum, Arts, etc        | Parking Lot  |
| Shopping                 | Parking Garage   |
| Food & Drink, Nightclubs | Public Parking  |
| Hotels                   | One Way Street  |
|                          | Street Number 300  |
|                          | Expressway   |
| Club or Other Building   |  |
| Office                   |  |
| Medical                  | Parks  |
| Academic                 | Trails          |
| Residential              | Water  |

1/4 mile







# Greater New Haven

- 15

Freeway & Interchange

84

Interstate Highway

6

US Highway

67

State Highway

Parks

Airports

Campuses

Hotels

Points of Interest

Golf Courses

Trails

Other Road

Interstate Highway

US Highway

State Highway

Parks

Airports

Campuses

Hotels

Points of Interest

Golf Courses

Trails
- ©2023 Hedberg Maps, Inc. All rights reserved. Reproduction by any means without permission of the publisher is prohibited. Your comments, corrections and suggestions are welcome.
- Hedberg Maps, Inc. [hedbergmaps.com](http://hedbergmaps.com)
- Visit

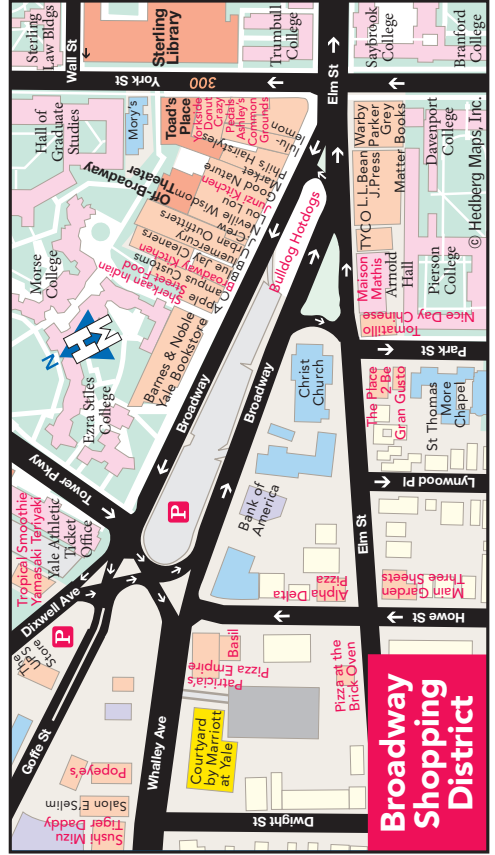
New Haven

[visitNewHaven.com](http://visitNewHaven.com)

203-777-8550

[info@visitnewhaven.com](mailto:info@visitnewhaven.com)
- 
- 36





# Shopping



*Walker Loden, Madison & New Haven*

We may love the convenience of shopping online, but there is nothing quite like discovering a unique shop or boutique where you can see and feel the quality of the merchandise. Throughout Greater New Haven, there are distinctive shops located around quintessentially New England town greens, as well as in malls and shopping districts.

Head to Milford, Branford, Guilford, or Madison to shop like the locals. **The Connecticut Post Mall** in Milford and the **Meriden Mall** offer convenience with familiar brands. The town greens are retail centers, and whether you are searching for the practical, the whimsical, or something in between, you will find the perfect store. Serious shoppers will need to refuel to maintain optimum performance. When you are in desperate need of caffeine, sugar, an adult beverage, or a full meal to complete your mission, restaurants are located near most retailers.

Another great shopping strategy is to travel through the region via Route 1, Route 5 or head to Universal Drive in North Haven, where all the staples can be found. Not to worry if you forgot to pack anything from toothpaste to a phone charger.

**The Shops at Yale** feature a wide range of shops, including elegant clothing designed by **Neville Wisdom**. If your plans are a little more rugged, you can check out **L.L. Bean**.

Hopefully, you will find something you love, and every time you use it, it will remind you of your time in Greater New Haven.

## SHOPPING AREAS

**Artists & Craftsman Supply**, 821-825 Chapel St., New Haven. 203-498-1414, [artistcraftsman.com](http://artistcraftsman.com)

**The Audubon Shop**, 907 Boston Post Rd., Madison. 203-245-9056, [theaudubonshop.com](http://theaudubonshop.com)

**Bohemian High**, 156 Bridgeport Ave., Milford. 203-301-4097, [bohemianhigh.com](http://bohemianhigh.com)

**Books & Company**, 1235 Whitney Ave., Hamden. 203-248-9449, [booksandcohamden.com](http://booksandcohamden.com)

**Breakwater Books**, 81 Whitfield St., Guilford. 203-453-4141, [breakwaterbooks.indielite.org](http://breakwaterbooks.indielite.org)

**Canvas Patch**, 5 River St., Milford. 203-878-7505

**Ciao Bella**, 673 Boston Post Rd., Madison. 203-245-1819, [shopciaoabella.com](http://shopciaoabella.com)

**Delmonico Hatter**, 47 Elm St., New Haven. 203-787-4086, [delmonicohatter.com](http://delmonicohatter.com)

**Devil's Gear Bike Shop**, 845 Chapel St., New Haven.

203-773-9288, [thedevelops.com](http://thedevelops.com)

**EBM Vintage**, 839 Chapel St., New Haven. 203-772-1728, [ebmnewhaven.com](http://ebmnewhaven.com)

**Ella Where She Shops**, 90 Broad St., Guilford. 203-453-4799, [ellawheresheshops.com](http://ellawheresheshops.com)

**Elm City Games**, 71 Orange St., New Haven. 203-689-3532, [elmcitygames.com](http://elmcitygames.com)

**Enson's Gentlemen's Fashions**, 1050 Chapel St., New Haven. 203-562-4136, [ensonsmenswear.com](http://ensonsmenswear.com)

**Evergreen Fine Crafts**, 21 Boston St., Guilford. 203-453-4324, [evergreen-fine-crafts.square.site](http://evergreen-fine-crafts.square.site)

**Fairhaven Furniture**, 72 Blatchley Ave., New Haven. 203-776-3099, [fairhaven-furniture.com](http://fairhaven-furniture.com)

**Flutterby**, 55 Whitfield St., Guilford. 203-458-1941

**Guilford Art Center**, 411 Church St., Guilford. The Shop, open year-round, features unique handcrafts by over 200 American artists, including jewelry, accessories, ceramics, glass-work, fiber arts, home décor, and more. All purchases benefit the GAC mission of supporting arts education and community appreciation. Open seven days a week. 203-453-5947, [guilfordartcenter.org](http://guilfordartcenter.org)

**Hello Boutique**, 1246 Whitney Ave., Hamden. 203-562-0204, [helloboutique.com](http://helloboutique.com)

**J. Horton**, 690 Boston Post Rd, Madison. 203-779-5343, [jhortonstore.com](http://jhortonstore.com)

**M.T. Cobbler**, 1717 Foxon Rd. #2, North Branford. 203-488-2422, [mtcobbler.com](http://mtcobbler.com)

**Maggie's of Madison**, 705 Boston Post Rd., Madison. 203-318-8883, [maggiesofmadison.com](http://maggiesofmadison.com)

**MELT Chocolatier**, 181 Research Dr., Unit 6, New Haven. 203-931-5191, [meltchocolatier.com](http://meltchocolatier.com)

**Milford Photo**, 22 River St., Milford. 203-882-3415, [milfordphoto.com](http://milfordphoto.com)

**MIX Design Store**, 29 Whitfield St., Guilford. 203-453-0202, [mixdesignstore.com](http://mixdesignstore.com)

**Odeon Boutique**, 918 Whalley Ave., New Haven. 203-389-8704, [odeonboutique.com](http://odeonboutique.com)

**R.J. Julia Booksellers & Café**, 768 Boston Post Rd., Madison. 203-245-3959, [rjjulia.com](http://rjjulia.com)

**The Red Barn**, 378 Amity Rd., Woodbridge. 203-389-2910, [redbarnwoodbridge.com](http://redbarnwoodbridge.com)



## Shopping

**Seaside Home & Gifts**, 172 Thimble Island Rd., Branford. 203-208-0521, [seasidehomeandgifts.com](http://seasidehomeandgifts.com)

**Tracy Brent Collections**, 76 Broad St., Guilford. 203-458-9100, [tracybrentcollections.com](http://tracybrentcollections.com)

**Vera Wolf Jewelry and Gifts**, 19 Boston St., Guilford. 203-458-1133, [verawolf.com](http://verawolf.com)

**Walker Loden LTD.**  
[shopwalkerloden.com](http://shopwalkerloden.com)  
• 788 Boston Post Rd., Madison. 203-245-8663  
• 258 Church St., New Haven. 203-865-8196

**Whitlock's Book Barn**, 20 Sperry Rd., Bethany. Selling used and rare books since 1948, Whitlock's Book Barn operates from two weather-beaten barns amid a scenic pasture. 203-393-1240, [whitlocksbookbarn.com](http://whitlocksbookbarn.com)

**Woodbridge Running Co.**, 7 Landin St., Woodbridge. 203-387-8704, [woodbridgerunningcompany.com](http://woodbridgerunningcompany.com)

**The Yarn Barn**, 1666 Litchfield Tpke., Woodbridge. 203-389-5117, [theyarnbarn.com](http://theyarnbarn.com)

### SHOPPING AREAS

**Branford Center**, Branford. Shoppers will find a little bit of everything in Branford Center. Offering quality gift shops, clothing boutiques, unique crafts, and treasured antiques. Downtown Branford is complete with sidewalk cafés, a wonderful array of restaurants, charming shops, and the historic Branford Green. Route 1 Branford contains many national chain stores and eateries. [branford-ct.gov](http://branford-ct.gov)

**Connecticut Post Mall**, 1201 Boston Post Rd., Milford. 203-301-2240, [shopconnecticutpostmall.com](http://shopconnecticutpostmall.com)

**Downtown Madison**, Madison is known for its locally owned shops, friendly purveyors, and attention to customer service. [madisonct.com](http://madisonct.com)

**Guilford Green Merchants**, Whitfield St., Guilford. Come shop in the boutiques and family-owned businesses surrounding the historic town Green, or experience the value and service

available in the many business centers conveniently located off Route 1, the historic Boston Post Road. [facebook.com/GuilfordGreenDistrict](https://facebook.com/GuilfordGreenDistrict)

**IKEA**, 450 Sargent Dr., New Haven. IKEA offers smart and affordable home furnishings, plus our famous restaurant, right off Exit 46 on I-95. Whether for your home, vacation home, apartment, dorm, or business, this is the place for all your furnishing needs. 888-888-4532, [IKEA.com](http://IKEA.com)

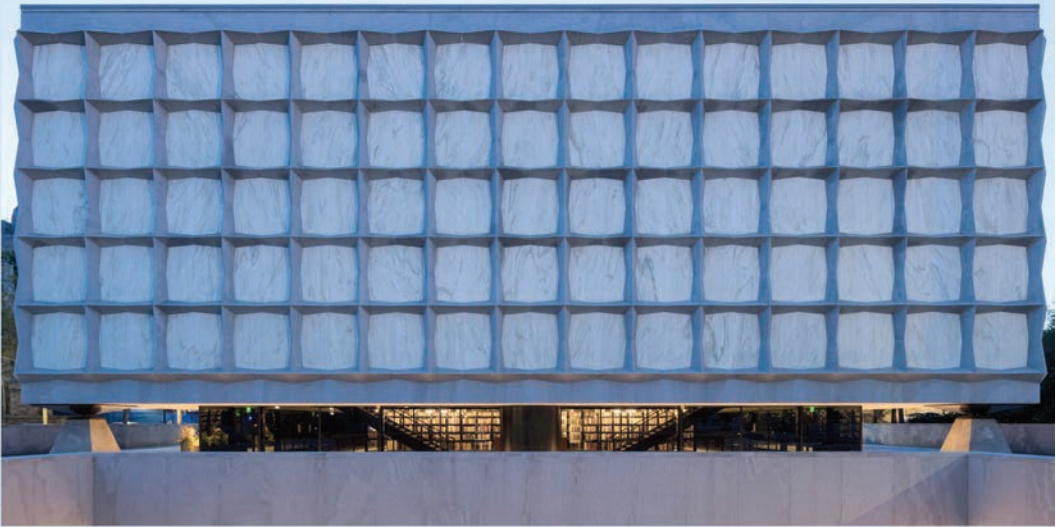
**Meriden Mall**, 470 Lewis Ave., Meriden. 203-235-3343, [meridenmall.com](http://meridenmall.com)

**The Shops at Yale**, New Haven. See page 40.

**Universal Drive**, North Haven. Major retailers from Barnes & Noble to Target.

**Westville Village Shops**, New Haven. Historic Westville Village offers one-of-a-kind cafes & restaurants, boutiques, galleries, salons, spas, and more. 203-355-7654, [westvilllect.org](http://westvilllect.org)

## BEINECKE RARE BOOK AND MANUSCRIPT LIBRARY



PUBLIC EXHIBITION HALL FREE AND OPEN DAILY

121 WALL STREET, NEW HAVEN

HOURS AND INFORMATION: [BEINECKE.LIBRARY.YALE.EDU](http://BEINECKE.LIBRARY.YALE.EDU)

Yale UNIVERSITY LIBRARY  
*Beinecke Rare Book & Manuscript Library*

## Shopping



### The Shops at Yale

*Barnes and Noble Bookstore at Yale*

**The Shops at Yale**, A unique collection of more than 65 local boutiques, national brands, cafes, restaurants & attractions with convenient parking in historic downtown New Haven. [theshopsat Yale.com](http://theshopsat Yale.com)

**Apple Store**, 65 Broadway, New Haven. 203-498-8950, [apple.com/retail/newhaven](http://apple.com/retail/newhaven)

**Atticus Bookstore Café**, 1082 Chapel St., New Haven. 203-776-4040, [atticusnhv.com](http://atticusnhv.com)

**Book Trader Café**, 1140 Chapel St., New Haven. 203-787-6147, [booktradercafe.net](http://booktradercafe.net)

**Campus Customs**, 57 Broadway, New Haven. 203-789-1608, [campuscustoms.com](http://campuscustoms.com)

**Derek Simpson Goldsmith**, 1094 Chapel St., New Haven. 203-787-2498, [dereksimpsongoldsmith.com](http://dereksimpsongoldsmith.com)

**Details for Hair**, 1022 Chapel St., New Haven. 203-777-4447

**dwell New Haven**, 1022 Chapel St., New Haven. 203-691-6751, [dwellnewhaven.com](http://dwellnewhaven.com)

**Fat Face**, 37 Broadway, New Haven. 203-553-3141, [us.fatface.com](http://us.fatface.com)

**Grey Matter Books**, 264 York St., New Haven. 203-553-3180, [greymatterbookstore.com](http://greymatterbookstore.com)

**Hull's Art Supply & Framing**, 1144 Chapel St., New Haven. 203-865-4855, [hullsnewhaven.com](http://hullsnewhaven.com)

**idiom Boutique**, 1014 Chapel St., New Haven. 203-782-2280, [idiomboutique.com](http://idiomboutique.com)

**J. Crew**, 29 Broadway, New Haven. 203-624-7101, [jcrew.com](http://jcrew.com)

**J. Press**, 262 Elm St., New Haven. 203-772-1310, [jpressonline.com](http://jpressonline.com)

**L.L. Bean**, 272 Elm St., New Haven. 888-660-1571, [llbean.com](http://llbean.com)

**Lou Lou Boutique**, 23 Broadway, New Haven. 203-687-4457, [loulouboutiques.com](http://loulouboutiques.com)

**lululemon**, 11+13 Broadway, New Haven. 475-275-9793, [lululemon.com](http://lululemon.com)

**More Amour**, 1130 Chapel St., New Haven. 203-859-5266, [shopmoreamour.com](http://shopmoreamour.com)

**Neville Wisdom**, 27 Broadway, New Haven. 203-745-5009, [nevillewisdom.com](http://nevillewisdom.com)

**Phil's Hairstyles**, 17 Broadway, New Haven. 203-865-9182

**Raggs for Men & Women**, 1020 Chapel St., New Haven. 203-865-3824, [raggsnewhaven.com](http://raggsnewhaven.com)

**Shiana Hair**, 1020 Chapel St. lower level, New Haven. 475-227-3784, [shianahair.com](http://shianahair.com)

**Sneaker Junkies**, 976 Chapel St., New Haven. 203-691-8090, [sneakerjunkiesusa.com](http://sneakerjunkiesusa.com)

**Soap+edi**, 1022 Chapel St., New Haven. 203-690-0139, [soapedi.com](http://soapedi.com)

**TYCO Printing**, 296 Elm St., New Haven. 203-562-9723, [tycopingrinting.com](http://tycopingrinting.com)

**Üni-Home Life**, 1046 Chapel St., New Haven. 203-535-0130

**The UPS Store**, 33 Dixwell Ave., New Haven. 203-772-4445, [theupsstore.com](http://theupsstore.com)

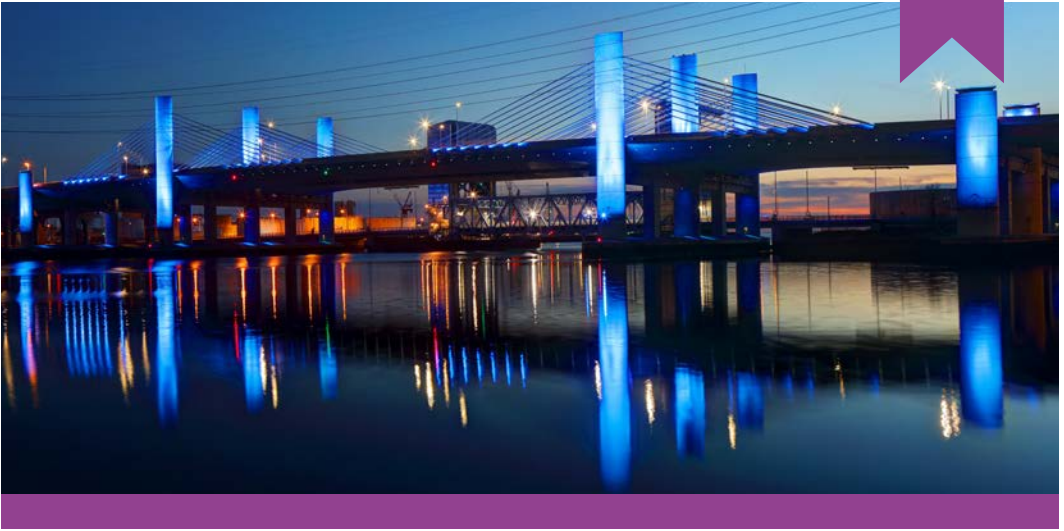
**Urban Outfitters**, 43 Broadway, New Haven. 203-776-7444, [urbanoutfitters.com](http://urbanoutfitters.com)

**Warby Parker**, 268 York St., New Haven. 888-492-7297, [warbyparker.com/retail](http://warbyparker.com/retail)

**The Yale Bookstore**, a Barnes & Noble College Store, 77 Broadway, New Haven. 203-777-8440, [yalebookstore.com](http://yalebookstore.com)



# Here, There & Everywhere



Pearl Harbor Bridge, Stock photo

## AIR

### **Tweed-New Haven Airport**

**(HVN)**, 155 Burr St., New Haven. Service provided by Avelo Airlines with destinations along the east coast and Chicago. I-95, exit 50. 203-466-8833, flytweed.com

### **Bradley International Airport**

**(BDL)**, Hartford. Served by eleven major carriers, with service to Europe by Aer Lingus. Approximately 45 minutes north of New Haven, I-91, exit 40. 860-292-2000, bradleyairport.com

Nearby airports include **JFK International Airport & LaGuardia International Airport** in New York (approximately 2 hours southwest of New Haven), **Newark Liberty International Airport** in New Jersey (approximately 2.5 hours southwest of New Haven), and **T.F. Green Airport** in Providence (approximately 1.5 hours east of New Haven).

## RAIL

**Amtrak, Union Station**, New Haven. Amtrak provides Northeast Corridor, Acela, and Vermonter service at New Haven, with connecting services at New York Penn Station and Boston South Station. 800-USA-RAIL, amtrak.com/stations/nhv

**Hartford Line**, The New Haven-Hartford-Springfield line stations include New Haven Union Station, New Haven State Street Station, Wallingford, Meriden, Berlin, Hartford Union Station, Windsor, Windsor Locks, Springfield Union Station, with additional stations coming soon. Trains operate seven days a week, including holidays. 877-287-4337, hartfordline.com

**Metro-North Railroad**, Union Station, New Haven. Metro-North provides service between New Haven and Grand Central Terminal (NYC). 212-532-4900, 877-690-5114, mta.info/mnr

**Shore Line East**, SLE provides daily commuter service between New Haven and New London to State Street Station and Union Station, New Haven. 877-287-4337, shorelineeast.com

## FERRY

**Bridgeport and Port Jefferson Steamboat Co.** provide year-round vehicle and passenger service between Bridgeport and Port Jefferson, Long Island, NY (80 minutes). 888-44-FERRY (CT only), 88844ferry.com

**Cross Sound Ferry Services, Inc.** provides year-round vehicle and passenger ferry service between New London and Orient Point, Long Island, NY (80 minutes). 860-443-5281 or 631-323-2525, longislandferry.com

## GROUND TRANSPORTATION

**GO Airport Shuttle Connecticut**, 45 Connair Rd., Orange. The company provides the convenience of affordable scheduled shuttles and door-to-door private limousine service. Shuttles include LaGuardia Airport (LGA) and John F. Kennedy International Airport (JFK), as well as private limousine service to Westchester County Airport (HPN), Bradley International Airport (BDL), and Newark Liberty (EWR) Airport. 203-891-1280, 2theariport.com

## LOCAL BUS TRANSPORTATION

**CTtransit** provides extensive public bus service in Greater New Haven,

including Tweed-New Haven Airport and Union Station. All buses are wheelchair accessible and equipped with bike racks. 203-624-0151, cttransit.com

### **Union Station-Downtown Shuttle**

This free shuttle connects rail passengers using Union Station to additional off-site parking locations. All shuttle trips extend to the New Haven Green, creating easy connections to all other CTtransit local bus routes in New Haven. The Union Station Shuttle operates approximately every 20 minutes, Monday through Sunday, from 6:05 a.m. to 12:55 a.m. 203-624-0151, cttransit.com/union-station-shuttle-new-haven

**Milford Transit** provides bus service in the Milford area and connecting destinations. All buses are wheelchair accessible. 203-874-4507, milfordtransit.com

**Greyhound Bus Lines** Union Station, New Haven, 800-231-2222, greyhound.com

## TAXIS

**Heritage Taxi** 203-466-6666

**M7** 203-777-7777, m7ride.com (Offers wheelchair-accessible taxis)

**Shoreline Taxi** 203-506-8294, shorelinetaxi.com

## CAR RENTALS

**Tweed-New Haven Airport**, Avis and Budget are available. Lyft ridesharing is available. flytweed.com/car-rentals/

# Here, There & Everywhere



State Street Train Station

**Union Station** - Avis, Budget, and Zipcar are available.

## PARKING IN DOWNTOWN NEW HAVEN

**Park New Haven** All meters in New Haven accept U.S. coins as payment, as well as Parkmobile. Many of the meters throughout the downtown area accept Visa, Mastercard, and Discover credit cards. The meters are in effect until 9:00 p.m. Monday through Saturday (excluding holidays). After 5:00 p.m., there are no time limits associated with any meter. Please check each meter for time and rate. 203-946-8936, parknewhaven.com

**Bicycling in New Haven** Bicycling is an enjoyable, inexpensive, efficient, and environmentally friendly mode of transportation. The city has an extended network of marked bike lanes and sharrows to expand and improve safe and convenient access to this means of mobility, exercise, and leisure. Biking is not allowed on sidewalks. Bikes must be equipped with lights and reflectors for riding at night. Only ride up to two across and communicate your directions with hand signals.

## TRAVEL INFO

**New Haven Visitor Center and Snack Shack**, exit 46, Long Wharf Dr., New Haven. Conveniently located off I-95, offering tourism information, on-the-go snacks, locally made treats, and more! 203-693-1061, newhaven-snackshack.com

**Branford Town Hall**, 1019 Main St., Branford. 203-488-8394, branford-ct.gov

**Guilford Information Kiosk**, 32 Church St., Guilford. 203-671-9351, visitguilfordct.com

**Hamden Visitor Center**, 3074 Whitney Ave., Hamden. 203-288-6431, hamdenregionalchamber.com

**Henry Whitfield House State Museum**, 248 Old Whitfield St., Guilford. 203-453-2457

**Madison Visitors Center**, 12 School St., Madison. 203-245-7394, madisonct.com

**Meriden City Hall**, 142 East Main St., Room 217, Meriden. 203-630-4000, meridenct.gov/visit

**Milford Regional Chamber of Commerce**, 1201 Boston Post Rd. Unit 1100, Milford. 203-878-0681, milfordct.com

**Town Green District**, 900 Chapel St., Suite 622, New Haven. Part diplomatic corps, part guide service, Town Green's Downtown Ambassadors are emissaries devoted to making New Haven a better place to work, visit, and do business. 203-401-4245, downtownnewhaven.com

## CURRENCY EXCHANGE

*Visit websites for the nearest location.*

• **Keybank**, [key.com/personal/services/branch/foreign-currency.jsp](http://key.com/personal/services/branch/foreign-currency.jsp)

• **TD Bank**, [tdbank.com/personal/foreigntaxchangeservices.html](http://tdbank.com/personal/foreigntaxchangeservices.html)

• **Wells Fargo**, [wellsfargo.com/foreign-exchange/international-tips](http://wellsfargo.com/foreign-exchange/international-tips)

## IMPORTANT PHONE NUMBERS

**Police, Fire, Emergency 911**

**Yale New Haven Hospital** - 20 York St.  
• Emergency (Adult) 203-688-2222

• Emergency (Pediatric) 203-688-3333  
• Administration 203-688-4242  
• Yale-New Haven Hospital Referral Line 203-688-2000

• **Smilow Cancer Hospital** 855-476-4569

**Yale New Haven Hospital** - St. Raphael's Campus  
• Emergency 203-789-3000  
• Patient Information 203-789-3475

**VA Connecticut Healthcare System** - West Haven Campus  
203-932-5711

**Midstate Medical Center**  
203-694-8200

**Bridgeport Hospital Milford Campus** 203-876-4000

## IMPORTANT CONNECTICUT LAWS FOR VISITORS

**Cell Phone Usage in Motor Vehicles** Connecticut law requires drivers 18 years of age and older to use hands-free accessories to legally use a cell phone or mobile electronic device while operating a motor vehicle. Under the law, drivers 16 or 17 years of age are prohibited from using any mobile telephone, including phones with hands-free accessories, while driving.

Also, no person shall use a hand-held mobile telephone or other electronic device or type, read, or send a text or a text message with or from a mobile telephone or mobile electronic device while operating a motor vehicle.

**Liquor Laws** The legal drinking age in Connecticut is twenty-one.

**Seat Belts and Child Restraint Systems** Connecticut law states (1) Infants must remain rear-facing until they are a minimum of both two years and 30 pounds; (2) Toddlers must be in a forward-facing car seat with a 5-point harness until five years and 40 pounds; (3) Children should ride in a booster until they reach eight years old AND 60 pounds (they must meet both requirements); and (4) children, teens, and teens must be in a seat belt whenever they ride in a vehicle.

**Further Recommended:** Children should ride in the back seat until they are 13 years old. All people and objects should be properly restrained whenever they are in a vehicle. Children who ride in a booster seat must use a lap and shoulder belt.





# Accommodations

**Key:**  
\$ Budget  
\$\$ Mid-Priced  
\$\$\$ Upscale

|   | Number of Rooms | Complimentary Breakfast | Pet Friendly | Free Parking | Microwave | Refrigerator | On-Site Restaurant | Fitness Center | Indoor Pool | Outdoor Pool | Suites | Meeting Space | Waterfront |
|---|-----------------|-------------------------|--------------|--------------|-----------|--------------|--------------------|----------------|-------------|--------------|--------|---------------|------------|
| BRANFORD  |                 |                         |              |              |           |              |                    |                |             |              |        |               |            |
| <b>American Inn \$</b> americaninn21.com<br>565 East Main St. I-95, exit 56 203-488-4381  | 22              |                         |              | •            | •         | •            |                    |                |             |              |        |               |            |
| <b>Baymont by Wyndham \$\$</b> wyndhamhotels.com/baymont<br>3 Business Park Dr. I-95, exit 56 203-871-3929                              | 84              | •                       | •            | •            | •         | •            |                    | •              | •           |              | •      | •             |            |
| <b>Branford Motel \$</b><br>470 East Main St. I-95, exit 55 203-488-5442  | 97              |                         |              | •            | •         | •            |                    |                |             |              |        |               |            |
| <b>Holiday Inn Express \$\$</b> ihg.com<br>309 East Main St. I-95, exit 55 203-488-4035   | 96              | •                       |              | •            |           | •            |                    | •              | •           |              | •      | •             |            |
| <b>Motel 6 \$</b> motel6.com<br>320 East Main St. I-95, exit 55 203-483-5828  | 100             |                         | •            | •            |           |              | •                  |                |             |              |        |               |            |
| <b>Owenego Inn \$\$</b> owenego.com<br>40 Linden Ave. I-95, exit 54 203-488-3805  | 8               |                         |              | •            |           |              | •                  |                |             |              |        | •             |            |
| <b>Rodeway Inn &amp; Suites \$</b> choicehotels.com<br>81 Leetes Island Rd. I-95, exit 56 203-481-4528                                  | 32              | •                       |              | •            | •         | •            |                    |                |             |              |        |               |            |
| <b>Thimble Islands B&amp;B \$\$\$</b> thimbleislandsbb.com<br>28 West Point Rd. I-95, exit 56 203-488-3693                              | 2               | •                       |              | •            |           |              |                    |                |             |              |        |               | •          |
| CHESHIRE  |                 |                         |              |              |           |              |                    |                |             |              |        |               |            |
| <b>Cheshire Welcome Inn \$</b> cheshirewelcomeinn.com<br>1106 South Main St. (Rte. 10) I-91, exit 10 203-272-3244                       | 25              |                         |              | •            | •         | •            |                    |                |             |              |        |               |            |
| CLINTON   |                 |                         |              |              |           |              |                    |                |             |              |        |               |            |
| <b>Clinton Motel \$</b> clintonmotel.net<br>163 East Main St. I-95, exit 63 860-669-8850  | 15              |                         |              | •            | •         | •            |                    |                |             | •            |        |               |            |
| <b>Lamplighter Motel \$</b><br>231 East Main St. I-95, exit 63 860-669-7983   | 15              |                         |              | •            | •         | •            |                    |                |             |              |        |               |            |
| <b>Village Motel \$</b><br>143 East Main St. I-95, exit 63 860-669-8403   | 17              |                         |              | •            |           |              |                    |                |             |              |        |               |            |
| GUILFORD  |                 |                         |              |              |           |              |                    |                |             |              |        |               |            |
| <b>Comfort Inn \$</b> choicehotels.com<br>300 Boston Post Rd. I-95, exit 59 203-453-5600  | 45              | •                       |              | •            | •         | •            |                    |                |             |              |        |               |            |
| <b>Red Roof Plus &amp; Suites \$</b> redroof.com<br>2300 Boston Post Rd. I-95, exit 57 203-453-0123                                     | 32              | •                       | •            | •            | •         | •            |                    |                |             |              | •      | •             |            |
| <b>Tower Inn &amp; Suites \$</b> towerinnsuites.com<br>320 Boston Post Rd. I-95, exit 59 203-453-9069                                   | 19              |                         |              | •            | •         | •            |                    |                |             |              | •      |               |            |
| HAMDEN  |                 |                         |              |              |           |              |                    |                |             |              |        |               |            |
| <b>Carriage House \$\$</b> thecarriagehousect.com<br>2297 Whitney Ave. I-95, exit 10 or Rte. 15, exit 61 203-780-8388                   | 43              |                         |              | •            | •         | •            |                    |                |             |              |        |               |            |
| <b>Clarion Hotel &amp; Suites \$\$</b> choicehotels.com<br>2260 Whitney Ave. Rte. 15, exit 61N/62S or I-91, exit 10 203-288-3831        | 103             | •                       | •            | •            | •         | •            | •                  | •              | •           |              | •      | •             |            |
| <b>Residence Inn by Marriott \$\$</b> residence-inn.marriott.com<br>2308 Whitney Ave. Rte. 15 exit 61N/62S or I-91 exit 10 203-691-5127 | 127             | •                       | •            | •            | •         | •            |                    | •              | •           |              | •      | •             |            |
| <b>Whitney Inn &amp; Suites \$</b> whitneyinn.com<br>3400 Whitney Ave. Rte. 15 exit 61N/62S or I-91, exit 10 203-288-2505               | 46              | •                       |              | •            | •         | •            |                    |                |             |              |        |               |            |
| KILLINGWORTH  |                 |                         |              |              |           |              |                    |                |             |              |        |               |            |
| <b>Chatfield Hollow Inn \$\$\$</b> chfbandb.com<br>10 Firetower Rd. I-95, exit 63 860-452-4147  | 5               | •                       |              | •            |           |              |                    | •              |             |              | •      | •             |            |



# Accommodations

**Key:**  
\$ Budget  
\$\$ Mid-Priced  
\$\$\$ Upscale

| Number of Rooms | Complimentary Breakfast | Pet Friendly | Free Parking | Microwave | Refrigerator | On-Site Restaurant | Fitness Center | Indoor Pool | Outdoor Pool | Suites | Meeting Space | Waterfront |
|-----------------|-------------------------|--------------|--------------|-----------|--------------|--------------------|----------------|-------------|--------------|--------|---------------|------------|
|-----------------|-------------------------|--------------|--------------|-----------|--------------|--------------------|----------------|-------------|--------------|--------|---------------|------------|

| MADISON  |     |   |   |   |   |   |   |   |   |   |   |   |
|--|-----|---|---|---|---|---|---|---|---|---|---|---|
| <b>Beech Tree Cottages</b> \$\$ beechtreecottages.com<br>1187 Boston Post Rd. I-95, exit 62 203-245-2676               | 8   |   |   | • | • | • |   |   |   |   |   |   |
| <b>Crescent Motel &amp; Antique Shop</b> \$<br>60 Boston Post Rd. I-95, exit 60N/59S 203-245-9145                      | 10  |   |   | • | • | • |   |   |   |   |   |   |
| <b>Cristy's Madison Inn &amp; Restaurant</b> \$\$ cristysmadison.com<br>73 West Wharf Rd. I-95, exit 61 203-245-7377   | 6   |   |   | • |   | • |   |   |   |   |   |   |
| <b>The Homestead</b> \$\$\$ homesteadmadison.com<br>391 Boston Post Rd. I-95, exit 62 203-245-0212                     | 10  | • |   | • |   |   |   |   |   |   |   |   |
| <b>Inn at Lafayette</b> \$\$ innatlafayette.com<br>725 Boston Post Rd. I-95, exit 61 203-245-7773                      | 5   |   |   | • |   | • |   |   |   | • | • |   |
| <b>Madison Beach Hotel by Hilton</b> \$\$\$ madisonbeachhotel.com<br>94 West Wharf Rd. I-95, exit 61 203-245-1404      | 32  |   | • | • |   | • | • |   |   |   | • | • |
| <b>Scranton Seahorse Inn</b> \$\$ scrantonseahorseinn.com<br>818 Boston Post Rd. I-95, exit 61 203-245-0550            | 7   | • | • | • | • | • |   |   |   | • | • |   |
| MERIDEN  |     |   |   |   |   |   |   |   |   |   |   |   |
| <b>Comfort Inn &amp; Suites</b> \$ choicehotels.com<br>900 East Main St. I-91, exit 17 203-440-9600                    | 104 | • |   | • | • | • | • |   |   | • | • |   |
| <b>Extended Stay America</b> \$ extendedstayamerica.com<br>366 Bee St. I-91, exit 16 203-630-1927                      | 104 | • | • | • | • | • |   |   |   | • |   |   |
| <b>Holiday Inn Express &amp; Suites</b> \$ ihg.com<br>2104 North Broad St. I-91, exit 17 203-443-5700                  | 91  | • |   | • | • | • | • | • |   | • | • |   |
| <b>The Inn</b> \$<br>1102 East Main St. I-91, exit 16 203-634-4700   | 64  |   |   | • |   |   |   |   |   |   |   |   |
| <b>MainStay Suites</b> \$ choicehotels.com<br>1151 East Main St. I-91, exit 16 203-379-5048                            | 124 | • | • | • | • | • | • |   |   | • |   |   |
| <b>Quality Inn &amp; Suites</b> \$ choicehotels.com<br>2090 North Broad St. I-91, exit 17 203-440-9770                 | 34  | • |   | • | • | • | • |   |   | • | • |   |
| <b>Red Roof Inn</b> \$ redroof.com<br>10 Bee St. I-91, exit 16N /17S or Rte. 15, exit 67 203-235-5154                  | 124 |   | • | • | • | • | • |   |   |   | • |   |
| MIDDLEFIELD  |     |   |   |   |   |   |   |   |   |   |   |   |
| <b>Bestway Inn</b> \$<br>31 Meriden Rd. I-91, exit 18 860-347-6955   | 25  | • |   | • | • | • |   |   |   |   |   |   |
| MILFORD  |     |   |   |   |   |   |   |   |   |   |   |   |
| <b>Devon Motel</b> \$<br>438 Bridgeport Ave. I-95, exit 34 203-874-6634  | 35  |   |   | • |   |   |   |   |   |   |   |   |
| <b>Hampton Inn</b> \$\$ hilton.com<br>129 Plains Rd. I-95, exit 36 203-874-4400  | 148 | • |   | • |   |   | • |   |   |   | • |   |
| <b>Hilton Garden Inn</b> \$\$ milford.hgi.com<br>291 Old Gate Ln. I-95, exit 40 203-783-9988                           | 120 |   |   | • | • | • | • | • |   | • | • |   |
| <b>Holiday Inn Express &amp; Suites</b> \$\$ ihg.com<br>278 Old Gate Ln. I-95, exit 40 203-877-9411                    | 94  | • |   | • | • | • | • | • |   | • | • |   |
| <b>Hyatt Place</b> \$\$ milford.place.hyatt.com<br>190 Old Gate Ln. I-95, exit 40 203-877-9800                         | 86  | • | • | • | • | • | • | • |   | • | • |   |
| <b>Lily Pad B&amp;B</b> \$\$<br>44 Prospect St. I-95, exit 39A 203-876-9996  | 3   | • |   | • |   |   |   |   |   |   |   |   |
| <b>Mayflower Motel</b> \$ mayflower-motel.com<br>219 Woodmont Rd. I-95, exit 40 203-878-6854                           | 80  |   | • | • | • | • |   |   |   |   |   |   |
| <b>Milford Inn</b> \$<br>345 Old Gate Ln. I-95, exit 40 203-874-2116   | 60  |   |   | • |   |   |   |   |   |   |   |   |
| <b>Motel 6</b> \$ motel6.com<br>111 Schoolhouse Rd. I-95, exit 35 203-877-8588   | 104 |   | • | • | • | • | • |   | • |   |   |   |
| <b>Red Roof Inn</b> \$ redroof.com<br>10 Rowe Ave. I-95, exit 35 203-877-6060  | 109 |   | • | • | • | • |   |   |   |   |   |   |
| <b>Residence Inn by Marriott</b> \$\$ marriott.com/bdrri<br>62 Rowe Ave. I-95, exit 35 203-283-2100                    | 74  | • | • | • | • | • | • |   | • | • | • |   |
| <b>Shoreline Motel</b> \$ shoreline-motel-milford.edan.io<br>735 Boston Post Rd. I-95, exit 37 203-876-8556            | 32  |   |   | • |   |   |   |   |   |   |   |   |
| <b>Springhill Suites by Marriott</b> \$\$ marriott.com/bdrsh<br>50 Rowe Ave. I-95, exit 35 203-283-0200                | 124 | • |   | • | • | • |   | • | • |   | • |   |
| <b>Super 8 by Wyndham</b> \$ wyndhamhotels.com<br>1015 Boston Post Rd. Rte. 15, exit 54 or I-95, exit 39A 203-878-3575 | 50  | • |   | • | • | • |   |   |   |   |   |   |





# Accommodations

**Key:**  
\$ Budget  
\$\$ Mid-Price  
\$\$\$ Upscale

| Number of Rooms | Complimentary Breakfast | Pet Friendly | Free Parking | Microwave | Refrigerator | On-Site Restaurant | Fitness Center | Indoor Pool | Outdoor Pool | Suites | Meeting Space | Waterfront |
|-----------------|-------------------------|--------------|--------------|-----------|--------------|--------------------|----------------|-------------|--------------|--------|---------------|------------|
|-----------------|-------------------------|--------------|--------------|-----------|--------------|--------------------|----------------|-------------|--------------|--------|---------------|------------|

| NEW HAVEN  |     |   |   |   |   |   |   |   |   |   |   |   |
|--|-----|---|---|---|---|---|---|---|---|---|---|---|
| <b>The Blake Hotel \$\$\$</b> theblakenewhaven.com<br>9 High St. I-95, exit 47 or I-91, exit 1 203-390-5352                              | 108 | • |   | • | • | • | • |   |   | • | • |   |
| <b>Cambria Hotel \$\$\$</b> choicehotels.com<br>20 Dwight St. I-95, exit 1 203-903-2999  | 130 | • |   |   |   |   | • | • |   |   | • |   |
| <b>Courtyard by Marriott - New Haven at Yale \$\$\$</b> marriott.com/hvndt<br>30 Whalley Ave. I-95, exit 47 or I-91, exit 3 203-777-6221 | 207 |   |   | • | • | • | • |   |   | • | • |   |
| <b>Days Inn \$</b> wyndhamhotels.com<br>270 Foxon Blvd. I-91, exit 8 203-868-0208  | 58  | • |   | • | • | • |   |   |   |   |   |   |
| <b>The Elm City Club \$\$\$</b> elmcityclub.com<br>155 Elm St. I-95 exit 47 or I-91, exit 1 203-624-3197                                 | 21  | • | • | • | • | • | • |   |   | • |   |   |
| <b>Graduate \$\$\$</b> graduatehotels.com/new-haven<br>1151 Chapel St. I-95, exit 47 or I-91, exit 1 475-207-7070                        | 72  |   | • |   | • | • | • |   |   | • | • |   |
| <b>Hotel Marcel \$\$\$</b> hotelmarcel.com<br>500 Sargent Dr. I-95, exit 46 203-780-7800   | 165 |   | • | • |   | • | • | • |   | • | • |   |
| <b>La Quinta Inn &amp; Suites by Wyndham \$</b> laquintanewhaven.com<br>400 Sargent Dr. I-95, exit 46 203-562-1111                       | 152 | • | • | • | • | • | • |   | • | • | • |   |
| <b>New Haven Hotel \$\$</b> newhavenhotel.com<br>229 George St. I-95, exit 47 or I-91, exit 1 203-498-3100                               | 135 |   | • |   |   | • |   | • |   | • | • |   |
| <b>New Haven Inn \$</b><br>100 Pond Lily Ave. Rte. 15, exit 59 203-387-6651  | 78  | • | • | • |   |   |   |   |   | • | • |   |
| <b>New Haven Stays \$</b> newhavenstays.com<br>139 Orange St. I-91, exit 3 203-654-9911  | 10  |   |   |   | • |   |   |   |   | • |   |   |
| <b>New Haven Village Suites \$\$</b> newhavenvillagesuites.com<br>3 Long Wharf Dr. I-95, exit 46 203-777-5337                            | 112 | • | • | • | • | • |   | • |   | • | • |   |
| <b>Omni New Haven Hotel at Yale \$\$\$</b> omninewhaven.com<br>155 Temple St. I-95, exit 47 or I-91, exit 1 203-772-6664                 | 306 |   | • |   | • | • | • | • |   | • | • |   |
| <b>Regal Inn \$</b><br>1605 Whalley Ave. Rte. 15, exit 59 203-389-9505   | 79  |   |   | • |   |   |   |   |   |   |   |   |
| <b>The Study at Yale \$\$\$</b> thestudyatyale.com<br>1157 Chapel St. I-95, exit 47 or I-91, exit 1 203-503-3900                         | 124 |   | • |   |   |   | • | • |   | • | • |   |
| <b>Three Judges Motor Lodge \$</b><br>1560 Whalley Ave. Rte. 15, exit 59 203-389-2161  | 35  |   |   | • | • | • |   |   |   |   |   |   |
| NORTH HAVEN  |     |   |   |   |   |   |   |   |   |   |   |   |
| <b>Best Western Plus \$\$</b> bwnorthhaven.com<br>201 Washington Ave. I-91, exit 12 203-239-6700   | 143 | • | • | • | • | • | • | • | • | • | • |   |
| ORANGE   |     |   |   |   |   |   |   |   |   |   |   |   |
| <b>Courtyard by Marriott \$\$</b> marriott.com/hvnco<br>136 Marsh Hill Rd. I-95, exit 41 203-799-2200                                    | 121 |   |   | • | • | • | • | • |   | • | • | • |
| <b>Homewood Suites by Hilton \$\$</b> hilton.com<br>99 Marsh Hill Rd. I-95, exit 41 203-553-9148   | 121 | • |   | • | • | • | • | • | • | • | • |   |
| WALLINGFORD  |     |   |   |   |   |   |   |   |   |   |   |   |
| <b>Courtyard by Marriott \$\$</b> marriott.com/hvnwa<br>600 Northrop Rd. I-91, exit 15 203-284-9400                                      | 149 |   |   | • | • | • | • | • | • |   | • | • |
| <b>Fairfield Inn \$\$</b> fairfieldinn.com/hvnfw<br>100 Miles Dr. I-91, exit 15 203-284-0001   | 119 | • |   | • | • | • |   | • |   | • |   |   |
| <b>Hilton Garden Inn \$\$</b> hilton.com<br>1181 Barnes Rd. I-91, exit 15 203-284-0000   | 139 |   |   | • | • | • | • | • | • |   | • | • |
| <b>Homewood Suites by Hilton \$\$</b> wallingford.homewoodsuites.com<br>90 Miles Dr. I-91, exit 15 203-284-2600                          | 104 | • | • | • | • | • |   | • | • |   | • | • |
| WEST HAVEN   |     |   |   |   |   |   |   |   |   |   |   |   |
| <b>Best Western Executive Hotel \$\$</b> bestwestern.com<br>490 Saw Mill Rd. I-95, exit 42 203-933-0344                                  | 100 | • |   | • | • | • |   | • | • |   |   |   |
| <b>Econo Lodge \$</b> choicehotels.com<br>370 Highland St. I-95, exit 42 203-285-6010  | 79  | • |   | • | • | • |   |   |   |   | • |   |
| <b>Hampton Inn &amp; Suites \$\$</b> hilton.com<br>510 Saw Mill Rd. I-95, exit 42 203-932-0404   | 98  | • |   | • | • | • |   | • | • |   | • | • |
| <b>Super 8 Motel \$</b> wyndhamhotels.com<br>7 Kimberly Ave. I-95, exit 44 203-200-7797  | 82  | • |   | • | • | • |   |   |   | • |   |   |



## DEVON MOTEL

Welcome to Devon Motel, your Milford "home away from home." Devon Motel aims to make your visit as relaxing and enjoyable as possible, which is why so many guests continue to come back year after year. Guest rooms offer air conditioning. You can also take advantage of some of the amenities offered by the motel including complimentary wi-fi and cable TV. As an added convenience, there is free parking available to guests. Devon Motel puts the best of Milford at your fingertips, making your stay both relaxing and enjoyable.

**(203) 874-6634**

**438 Bridgeport Avenue, Milford, CT 06460**



*Unique Boutique  
with a Nautical Touch*



*Seaside Home and Gifts*

172 Thimble Island Rd. Branford, Connecticut 06405, US

**(203)-208-0521**

[www.seasidehomeandgifts.com](http://www.seasidehomeandgifts.com)

[info@seasidehomeandgifts.com](mailto:info@seasidehomeandgifts.com)

Get comfortable at Courtyard New Haven at Yale. Located walking distance from Yale University, our hotel in New Haven CT has everything you need to make the most of your stay. Recharge in our hotel rooms with free Wi-Fi, ergonomic workspaces, and plush Marriott bedding. Satisfy your appetite at the Bistro, our onsite restaurant, and bar serving healthy breakfast and dinner options, Starbucks® coffee, and evening cocktails. You can also try New Haven restaurants near our hotel like Yorkside Pizza, Basile, and Claire's Corner Copia.

Maintain your active lifestyle at our 24-hour fitness center or enjoy outdoor activities at East Rock Park. During your stay, enjoy easy access to attractions like York Square, Oakdale Theatre, Knights of Columbus Museum, and local art studios. Whatever brings you to town, make your stay a success at Courtyard New Haven at Yale.

**COURTYARD®**  
BY MARRIOTT

New Haven At Yale



**30 Whalley Avenue,  
New Haven, CT 06511**

**Reservations:  
203-777-6221  
[www.marriott.com/hvndt](http://www.marriott.com/hvndt)**



# 2023

# GREATER NEW HAVEN

## Relocation Guide

[rexdevelopment.com](http://rexdevelopment.com)

### **LIVING IN GREATER NEW HAVEN** 48

- Regional Map
- Housing
- Rental Housing Cost Comparison

### **REGIONAL ECONOMIC OUTLOOK** 52

- Employment in New Haven County  
Jobs by Key Sectors
- Leading Employers

### **FLOURISHING SECTORS** 55

- Healthcare
- Biomedical & Life Sciences
- Higher Education
- Advanced Materials & Manufacturing
- Arts, Culture & Tourism
- Technology
- Entrepreneurs

### **WORKFORCE** 62

- Educational Attainment
- Getting the Right Skills
- Demographics

### **RESOURCES** 64

- Economic Development  
Resources by Town
- State of Connecticut Resources
- Chambers of Commerce
- Coworking Spaces
- Education
- Community Centers



## Living In Greater New Haven



*Faulkner's Island Lighthouse, Guilford, Allan Wood Photography/Shutterstock.com*

Greater New Haven is a vibrant region located in southern Connecticut that spans from Milford to Meriden to Madison. These towns are a vibrant region of small cities, comfortable suburbs, and charming rural communities ideally situated between New York and Boston. Residents and businesses routinely identify the outstanding quality of life as the basis of their decision to locate here.

Home to six colleges and universities, one of the largest hospital systems in the country, and a balance of corporate headquarters, small businesses, and non-profit organizations, the Greater New Haven region thrives in part due to its diversity of employment opportunities and people. As a truly global community, the region's residents hail from around the world, some with roots centuries deep and others who have just arrived, making life here a rich cultural experience.

A factor that contributes to the high quality of life in Greater New Haven is its vibrant arts and cultural scene. The region is home to numerous museums, galleries, theaters, and music venues, offering residents a wide range of entertainment options. Additionally, the area is known for its diverse cuisine, with numerous restaurants, cafes, and food trucks serving up delicious food from all over the world. The colleges and universities here provide residents with access to world-class education and research opportunities, as well as a wealth of cultural and intellectual activities.

The natural beauty of the region is also a significant draw for many residents. Greater New Haven is located along the Long Island Sound, providing easy access to beaches, parks, and other outdoor recreational opportunities. The region is also known for its historic architecture and charming neighborhoods, making it an attractive place to live and work.





# *In a global arena, discover the **New Haven** advantage.*



- ▶ **Nationally recognized** for cultural equity and inclusion.
- ▶ **Affordable location** between New York and Boston.
- ▶ **Fastest growing economy** of any major Connecticut city.
- ▶ **Leading destination** in life science, quantum computing, craft food & social impact technology.

📍 **CITY:**  
Connecticut's  
first Cultural  
Equity Plan.

📍 **R&D:**  
Single-largest life-  
sciences cluster in  
CT, 4th-densest in  
the country.

💰 **VENTURE:**  
3rd fastest growing  
US city for venture  
capital investment.

Justin Elicker, *Mayor*  
To learn more, contact:  
[info@edcnewhaven.com](mailto:info@edcnewhaven.com)

Top left photo courtesy of Market New  
Haven, Inc. and Full Send Productions.  
[newhavenct.gov](http://newhavenct.gov) #nhv @newhavened

**TOGETHER  
NEW HAVEN**



Milford, CT , istock.com/Denis Tangney Jr.

Picturesque New England towns and lively small cities make the region a desirable home for people of all ages. Strong schools with beautiful parks and beaches are ideal for raising children. At the same time, an attractive mix of cultural institutions, restaurants, and shopping also makes it an inviting destination for young professionals and empty nesters.

Greater New Haven offers the beauty of shoreline living and bucolic rural towns, all within 369 sq. miles if you prefer suburban living. These towns embody the traditional vision of New England life with modern amenities, including a full Shore Line East commuter rail service that serves New London to New Haven. The Hartford Line, which extends

from New Haven to Springfield, has two regional stations along the line, in Meriden and Wallingford, with a new station in North Haven coming soon. The 2022 Berkshire Hathaway Annual Connecticut Market Report states that the median price for home sales in the region is \$300,000.

The city of New Haven offers urban living on a manageable scale. Recent residential developments and others underway provide modern, energy-efficient units for rent. City dwellers relish the liveliness of downtown and its walkability. Wherever you choose to reside, you can easily access all the features that make Greater New Haven a wonderful place to live.

RENTAL HOUSING  
COST COMPARISON

| LOCATION      | AVERAGE RENT | AVERAGE APARTMENT SIZE |
|---------------|--------------|------------------------|
| NEW HAVEN, CT | \$2,048      | 776 sq. ft.            |
| NEW YORK, NY  | \$4,614      | 703 sq. ft.            |
| BOSTON, MA    | \$3,758      | 812 sq. ft.            |

With the widespread acceptance of working from home or in a hybrid model, employees now have more options on where to live and different expectations on what their new home should offer. With rail service offered to New York City (both Grand Central Terminal and Penn Station), Boston, and Hartford, it is easy to work in any of these cities while residing in Greater New Haven. One of the perks of choosing Greater New Haven is that rental costs can be 50% less than Manhattan, according to April 2023 data from rentcafe.com.





## Regional Economic Outlook



Engleman Hall at Southern Connecticut State University Isabel Chenoweth/SCSU

According to the Bureau of Economic Analysis, Connecticut ranked 17th nationally for economic growth in 2022. This growth is consistent with the results of the recent REX Development Business Recovery Survey. The survey found that 70% of businesses in Greater New Haven are at pre-pandemic or higher employment levels, with another 24% expecting full employment by mid-2023.

With six colleges and universities, the area prioritizes innovation, research, and development.

Entrepreneurs benefit from a robust knowledge-based economy and access to global thought leaders. Yale University is recognized for cutting-edge research in numerous fields, maximizing the talents of its renowned faculty, and ongoing investment in state-of-the-art facilities. Research projects at Yale have resulted in several successful spin-offs, particularly in bioscience. The National Institute of Health funds many research studies at Yale University as well as other regional entities. Since 2010, the NIH provided \$5.7 billion to the region for R&D.

Both Yale New Haven Health and Hartford Healthcare are increasing their presence in the region. While YNHH is an anchor institution, Hartford Healthcare is relatively new to our region. With an aging population, they are anticipating a need for additional services. Both organizations are utilizing new technologies to provide services, particularly telehealth. In addition, Yale New Haven Health is constructing a new \$838 million Neuroscience Institute in New Haven.

Investment in new commercial and residential development is expanding. After experiencing a robust return on investment, many developers return to the region for investment in additional projects. Residential and bioscience investments remain solid for the foreseeable future, with unmet housing and lab space needs. Two projects (100 and 101 College Street) represent over 1 million square feet of bioscience space.

The manufacturing sector is also poised for growth. With companies leaning towards the on-shoring of component parts, our manufacturers are ready to seize the opportunity. In addition, there is a steady demand for workers for the state's established aerospace and defense industries. Industry 4.0 is being widely implemented, and the state offers substantial incentives and programs for workforce development and capital upgrades.

Source: <https://report.nih.gov/award>

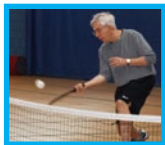
### More than a gym... Your second home!

- Fitness Center & Spa
- Summer Day Camp
- Early Childcare
- Meeting, Event & Coworking spaces



360 Amity Rd.,  
Woodbridge

(203)  
387  
2424



Learn more at [jccnh.org](https://jccnh.org)



# Employment in New Haven County



Greater New Haven is fortunate to have five solid sectors supporting our economy: healthcare; higher education; bioscience; manufacturing; and arts, culture, and tourism. These industries, and others, are actively seeking employees. As of March 2023, there were over 18,000 open positions in the Milford-New Haven MSA. While there are career opportunities in most fields, registered nurses were the most in-demand occupation. Many employers continue to offer hybrid work environments, as well as schedule adjustments to accommodate child/eldercare, transportation, and other barriers to workforce participation.

## TOP 10 INDUSTRIES BY EMPLOYMENT IN NEW HAVEN COUNTY

| INDUSTRY   | NUMBER OF ESTABLISHMENTS | NUMBER OF EMPLOYEES | % OF TOTAL EMPLOYEE | ANNUAL AVERAGE WAGE BY JOB |
|--|--------------------------|---------------------|---------------------|----------------------------|
| Health Care and Social Services                  | 4,881                    | 77,177              | 21.60%              | \$61,634                   |
| Educational Services                             | 499                      | 50,882              | 14.20%              | \$80,080                   |
| Retail Trade                                     | 2,774                    | 39,249              | 11.00%              | \$38,512                   |
| Manufacturing                                    | 1,117                    | 28,396              | 7.90%               | \$74,177                   |
| Accommodation and Food Services                  | 2,126                    | 24,152              | 6.70%               | \$24,568                   |
| Admin. & Support & Waste Mgt. & Rem. Services    | 1,464                    | 20,772              | 5.80%               | \$53,794                   |
| Transportation & Warehousing                     | 542                      | 19,091              | 5.30%               | \$48,262                   |
| Professional, Scientific, and Technical Services | 2,874                    | 16,024              | 4.50%               | \$114,534                  |
| Construction                                     | 2,063                    | 15,089              | 4.20%               | \$74,798                   |
| Wholesale Trade                                  | 1,821                    | 13,586              | 3.80%               | \$92,495                   |

Source: U.S. Bureau of Labor Statistics (BLS)

Great ideas are born when the time is right. But businesses can only grow when the right resources come together in one place. Welcome to REX, a region of 15 South Central Connecticut towns where the business environment is optimized for companies ready to move, advance, and evolve.

**We are prepared to put the resources you've been looking for within your reach.**

**REX**  
DEVELOPMENT

**ONE REGION. 15 TOWNS. UNLIMITED POTENTIAL.**

PO Box 1576, New Haven, CT 06506 | 203-821-3682 | [www.rexdevelopment.com](http://www.rexdevelopment.com)



# Leading Employers

Many of the region’s leading employers are in the healthcare, biomedical/life sciences, higher education, and manufacturing sectors. These sectors offer highly competitive wages and opportunities for career growth. Engineers and construction workers are also in high demand in anticipation of extensive transportation and communication infrastructure upgrades. The State of Connecticut has many available positions across many departments.

| COMPANY NAME  | TOWN                    | INDUSTRY/BUSINESS DESCRIPTION                  | SIZE/ RANGE |
|---|-------------------------|--|-------------|
| Yale New Haven Health                                       | New Haven               | Hospitals/Clinics                              | 10,000+     |
| Yale University   | New Haven               | Schools-Universities & Colleges Academic       | 10,000+     |
| Amazon  | Wallingford/North Haven | Internet & Catalog Shopping/Fulfillment Center | 5,000-9,999 |
| Veterans Affairs Connecticut Healthcare System              | West Haven              | Hospitals/Clinics                              | 1,000-4,999 |
| Avangrid (United Illuminating and Southern Connecticut Gas) | Orange                  | Utilities                                      | 1,000-4,999 |
| Laticrete International, Inc.                               | Bethany                 | Adhesives & Glues (Whls)                       | 1,000-4,999 |
| Masonicare  | Wallingford             | Hospitals/Clinics                              | 1,000-4,999 |
| Quinnipiac University                                       | Hamden                  | Schools-Universities & Colleges Academic       | 1,000-4,999 |
| Edgewell Personal Care                                      | Milford                 | Home & Personal Care Products                  | 500-999     |
| Knights of Columbus Insurance                               | New Haven               | Insurance                                      | 500-999     |
| SUBWAY World Headquarters (Doctor's Associates Inc.)        | Milford                 | Restaurant Management                          | 500-999     |
| Medtronic   | North Haven             | Surgical Appliances-Manufacturers              | 500-999     |
| Southern Connecticut State University                       | New Haven               | Schools-Universities & Colleges Academic       | 500-999     |
| Assa Abloy Door Security Solutions                          | New Haven               | Security Systems                               | 500-999     |
| Honeywell (Fire Lite)                                       | North Branford          | Safety Equipment & Clothing-Mfrs               | 500-999     |
| MidState Medical Center                                     | Meriden                 | Hospitals                                      | 500-999     |
| Gaylord Specialty Healthcare                                | Wallingford             | Hospitals/Clinics                              | 500-999     |
| Quest Diagnostics   | Wallingford             | Laboratories-Medical                           | 500-999     |



Avangrid Courtesy of Avangrid



*Yale New Haven Hospital Michael Marsland/Yale University*

Healthcare continues to be a significant and growing sector of the regional economy, with core institutions making substantial financial investments in facilities and workforce development.

The Yale New Haven Healthcare System has broken ground for an \$838 million, 505,000 sq. ft. neuroscience campus in New Haven. The project includes two new towers housing 214 new inpatient beds and a 198-space underground parking garage, creating 400 construction jobs. Hartford Healthcare continues expanding its services in the region. The region's federally qualified health centers are undertaking major expansions, including the Hill Health Center's new 15,000 sq. ft. facility at the Dixwell Q-House and Fair Haven Community Healthcare's plan to construct a new three-story facility.

Yale New Haven Health (YNHH) is a full-fledged healthcare delivery network that includes Yale New Haven Hospital, Bridgeport Hospital (Bridgeport and Milford campuses), Greenwich Hospital, Lawrence + Memorial Hospital, Westerly Hospital, and Northeast

Medical Group—with more than 29,000 employees and 7,500 medical staff, Yale New Haven Health had over 153,000 inpatient discharges and 5.2 million outpatient encounters in Fiscal Year 2021. YNHH is the primary teaching hospital for Yale School of Medicine.

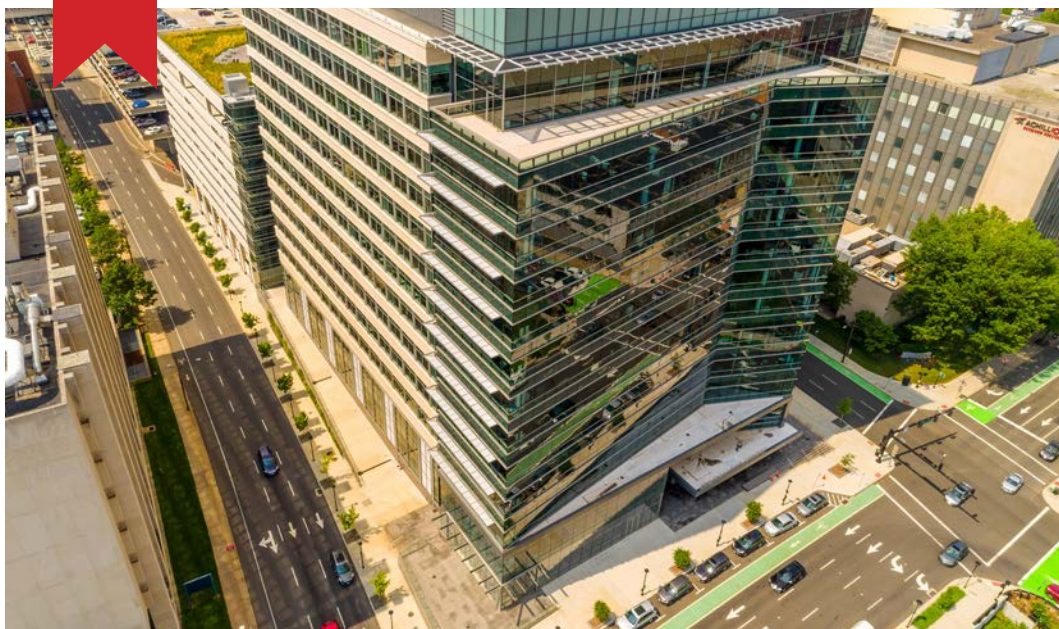
The region has two additional inpatient hospitals: VA Connecticut Healthcare System and MidState Medical Center. Hartford Healthcare is expanding its presence in the region with additional outpatient facilities in Milford and North Haven.

Our aging population will continue to create demand for healthcare services from hospitals, nursing homes, rehabilitation centers, private and in-home service providers, and congregate living facilities. The next decade will see significant shifts in the design of health systems and healthcare, propelled by digital health, growing consumerism, mounting financial constraints, and accelerated by COVID-19 and the prospect of future pandemics.

*Source: Yale New Haven Health Annual Report, Fiscal Year 2021*



## Biomedical & Life Sciences



100 College Street, Full Send Productions/Market New Haven

Bioscience is thriving in Greater New Haven. Anchored by scientific research at Yale, the cluster includes both large pharmaceutical companies and small startups developing new drugs, therapies, and medical devices. With a statewide priority focus on bioscience, the South Central Connecticut region is ground zero for the bioscience infrastructure of skilled scientists and technicians.

Bioscience research institutions, including Yale University and Yale New Haven Health System, lead the way in advances in medicine. The region is a hub for biotech and pharmaceutical companies developing new treatments, particularly for rare diseases. Our location between New York City and Boston allows for extensive collaboration. We continue to develop more laboratory space for bioscience companies, especially those ready to move into graduate space without a long-term lease.

### MAJOR CONSTRUCTION PROJECTS INCLUDE:

- 101 College Street (500,000 sq. ft., opening in 2023)
- 275 South Orange Street (250,000 sq. ft., planned construction in 2023, opening in 2025)
- Parcel B at Downtown Crossing (200 – 500,000 sq. ft., available site)
- Science Park (200,000 sq. ft., available site)

Recent successes include foreign direct investment, mergers and acquisitions, drug approv-

als, initial public offerings, and expansions.

- Hyperfine software update approved by FDA
- Biohaven wins fast-track approval for a spinal drug
- Science Park planning new housing, lab space
- ConnCAT launches paid biopharma training program
- Connecticut Innovations Launches Future Fund
- German Biomed X to establish a facility in New Haven
- California biotech buys Branford's IsoPlexis
- Wallingford's CPS Fluidics acquires Canadian firm
- Bioasis to merge with Midatech Pharma
- Ivy Biomedical to build in Branford
- Bio-Techne opens new facility in Wallingford
- Elm City Bioscience Center opens
- Medtronic partners with BioIntelliSense re-wearable

Personalized medicine is a significant growth opportunity for us. The Yale Center for Genomic Health is tackling the most pressing challenge in the field: how to translate increasingly powerful genomic technologies and vast data resources into meaningful improvements in healthcare in a way that equitably benefits people of all ancestry groups and ethnicities.



Yale University Campus Skyline, Michael Marsland/Yale University

The colleges and universities sprinkled throughout the region provide an exceptional college education for their students, contribute to the development of the area’s primary and secondary students, and encourage cultural growth and lifelong learning, greatly contributing to our quality of life.

New Haven is home to Yale University, one of the most respected universities in the world. Yet Yale is only one of the six colleges in Greater New Haven. Drawing approximately 50,000 students from around the globe, higher education creates a highly skilled workforce and many career opportunities within the colleges.

The colleges offer an extensive range of concentrations, such as arts, science, business, computer science, engineering, law, medicine, nursing, and public health. The colleges’ curricula support our most vibrant industries.

With over 30,000 employees, Greater New Haven’s colleges and universities offer many career opportunities. While Yale University is an exceptional research organization, a glance at any high-profile job posting sites demonstrates the diversity of available career paths. The positions can be highly technical, administrative, or scholarly, as these institutions operate as mini-cities.

The impact of higher education on the region’s vitality goes far beyond educating students and direct hires. The students generate substantial demand for the goods and services provided by local businesses. In addition, the colleges and universities actively engage the communities in exchanging ideas and cultural activities, a vital contributor to our exceptional quality of life.

| INSTITUTION                           | TOTAL ENROLLMENT | PHONE NUMBER                 |
|---------------------------------------|------------------|------------------------------|
| Yale University                       | 14,525           | 203-432-4771                 |
| Quinnipiac University                 | 9,800            | 203-582-8200                 |
| Southern Connecticut State University | 8,788            | 203-392-SCSU or 888-500-SCSU |
| Gateway Community College             | 6,864            | 203-285-2000                 |
| University of New Haven               | 7,513            | 203-932-7000 or 800-DIAL-UNH |
| Middlesex Community College           | 2,424            | 860-343-5800                 |
| Albertus Magnus                       | 1,961            | 203-773-8550 or 800-578-9160 |
| TOTAL                                 | 48,451           |                              |

Source: College Navigator, August 2022



# Honeywell

THE POWER OF CONNECTED

Honeywell

Quoting Governor Ned Lamont,  
*"Connecticut is the Silicon Valley of advanced  
manufacturing, plain and simple".*

The region, built upon a robust and diverse manufacturing base, abounds with small manufacturers using highly-skilled workers to produce precision, high-value-added products. Today's manufacturing is lean, green, and clean, employing advanced technology, including IoT, II.0, AR, Mechatronics, and Machine Learning. By leveraging cutting-edge technologies and embracing a more data-driven and connected approach, the region's manufacturers have improved their operations, increased their competitiveness, and improved customer service.

Manufacturing in our region is diverse and spans firms that make precision instruments for medical and aerospace industries, security devices for information systems, specialty chemicals, and fixtures in metals, plastics, and other materials using a range of technologies and processes from additive manufactur-

ing, 3D printing to traditional stamping and machine tooling, and more. Some have been operating as family businesses for over five generations; others are larger, multinational corporations.

Our highly skilled and productive workforce focuses on lean and innovative manufacturing. Workforce Alliance and our local colleges are educating the next generation of manufacturers through stackable certificate programs. These programs have been developed in collaboration with the private sector to ensure that the students have the skills they need to enter the workforce. The state's aerospace and defense Regional Sector Partnership also focuses on developing a workforce pipeline.

Some of our larger manufacturing employers include BYK, Amphenol, Edgewell, Honeywell, Sargent/Assa Abloy, and Ulbrich Steel.





*The Blake Hotel*

Arts, culture, and entertainment create vibrant and thriving communities in Greater New Haven. Events like festivals, concerts, and art and cultural exhibitions allow people to interact and develop strong relationships. The region outshines its competitors in both the quantity and quality of content.

The region's creative community works with primary and secondary schools to educate students about the value of arts and culture in their lives and career paths. Experiential learning on both the creative and technical aspects of the arts is offered through afterschool programs and internships, and New Haven has a high school devoted to the arts.

Tourism in Greater New Haven is a mix of leisure, group, association, and business travelers. While we draw visitors from around the globe, recent years have seen a dramatic increase in leisure travelers from the local drive market. Guests travel here for outdoor recreation along the shore, a robust network of hiking and biking trails, and our theater, music, and visual arts.

The region's pizza is internationally renowned and is often featured on food and travel segments, blogs, and social media. If you ever need a conversation starter, ask for someone's opinion on the best pizza.

As the tourism industry continues to rebound, new residents can explore careers in hospitality. Hotels and restaurants are seeking enthusiastic employees who are eager to welcome guests. Workforce training programs are available, and extensive on-the-job training exists for people new to the industry.

To support the hospitality industry, REX Development maintains [visitNewHaven.com](http://visitNewHaven.com) and the Visit New Haven app, an annual visitors and relocation guide, distributes weekly newsletters, hosts familiarization tours for travel writers and tour operators, and attends a variety of tradeshow to reach both national and international audiences. We are hosting travel writers and tour operators to attract more visitors to our region.

## Technology



*Yale Quantum Lab, Andrew Hurley/Yale University*

To quantify the importance of technology in Greater New Haven, simply search any online job posting site. While we have a strong technology sector, many professional technology jobs can be found within the healthcare, biomedical and life sciences, higher education, and manufacturing sectors. With a highly educated workforce and initiatives to develop talent through certificate programs, we are investing for continued, inclusive growth in this sector. In support of these efforts, the State of Connecticut is rolling out tech-specific programs such as the Innovation Corridor, Greentech, and Broadband for All.

In October 2022, Connecticut Technology Council and Marcum LLP announced the Marcum Tech Top 40 Companies.\* The following Greater New Haven tech companies received this distinction.

- **Inbox Health, Software, New Haven:** Built for medical billers, Inbox Health automates patient billing, patient payments and modernizes the patient support experience.
- **ARVINAS, INC., Life Sciences, New Haven:** Arvinas is a clinical-stage biotechnology company leading the way in targeted protein degradation therapeutics.

- **IsoPlexis Corp, Life Sciences, Branford:** IsoPlexis is advancing immunotherapies and targeted therapies to a more highly precise & personalized stage by revealing unique immune biomarkers in small subsets of cells.
- **AMPHENOL CORP /DE/, Advanced Manufacturing, Wallingford:** Amphenol is one of the world's largest providers of high-technology interconnect, sensor, and antenna solutions.
- **Clarity Software Solutions, Inc., Software, Madison:** Clarity Software Solutions, leaders in healthcare communications, create solutions that allow providers to manage and distribute member data securely.
- **Avangrid, Inc., Energy, Environment, or Green Technology, Orange:** A leading sustainable energy company in the United States with electricity, natural gas, onshore wind, offshore wind and solar energy.

<https://www.marcumllp.com/press-releases/marcum-llp-announces-fastest-growing-tech-companies-in-connecticut-2022>





*TSAI Center for Innovative Thinking at Yale, Dan Renzetti/Yale University*

## Great minds think differently in innovation centers.

If starting your own business is one of your goals when relocating to Connecticut, you will be in good company. Since 2018, the residents of Greater New Haven have launched more than 25,000 businesses. While spin-off companies from Yale garner the most recognition, innovation occurs on a smaller scale in various fields.

REX Development, the economic development entity for South Central Connecticut, is keen to assist entrepreneurs and startups with assistance locating space, accessing financing, tapping into the existing entrepreneurial ecosystem, and connecting the budding businessperson with industry experts, municipal economic development officials, and additional business services. Industry associations, such as BioCT and ManufactureCT, offer targeted events to bring similar businesses together to address issues collectively.

Another great resource is CI (Connecticut Innovations). CI provides venture capital and strategic support for early-stage technology

companies, extensive networking opportunities, and mentoring for specific skills and industries. CTNext, a wholly-owned subsidiary of Connecticut Innovations, focuses on expanding the resources available to groundbreaking companies; developing and recruiting the talent to meet the needs of both early-stage and established companies; building the support ecosystem required to incubate and accelerate new business expansion; and to invest in communities to provide everyone the opportunity to work, live, and play.

A leader in innovation, Yale's research often results in new companies in medicine, pharma, bioscience, environment, computer science, and quantum computing, among other sectors. Yale Ventures, launched in 2022, seeks to foster and accelerate a vibrant entrepreneurship and innovation ecosystem that increases support, resources, and opportunities for Yale innovators—faculty and students—as they translate their ideas and discoveries into new ventures that will positively impact the world's greatest challenges.





# Workforce

Workforce development is high on the list of regional and state priorities. The Governor’s Workforce Council is ensuring Connecticut maintains the most accessible, equitable, aligned, and high-quality workforce pipeline in the country. Regional Sector Partnerships (RSP), a key element of the council’s strategy, are available for industries including manufacturing, healthcare, bioscience, construction, financial services, entrepreneurs, STEM, and logistics. The RSPs address workforce shortages through training, increasing employer engagement, and encouraging innovation.

## EDUCATIONAL ATTAINMENT OF THE POPULATION 25 YEARS AND OLDER IN GREATER NEW HAVEN, 2021

|             | POPULATIONS<br>25 YEARS AND<br>OLDER | HIGH SCHOOL/<br>EQUIVALENT |         | COLLEGE                       |                       |                                   |
|-------------|--------------------------------------|----------------------------|---------|-------------------------------|-----------------------|-----------------------------------|
|             |                                      | No<br>Diploma              | Diploma | Some<br>College,<br>No Degree | Associate’s<br>Degree | Bachelor’s<br>Degree or<br>Higher |
| Country     | 604,512                              | 9.7%                       | 29.6%   | 16.7%                         | 7.3%                  | 36.6%                             |
| Connecticut | 2,515,137                            | 8.9%                       | 26.1%   | 16.6%                         | 7.8%                  | 40.5%                             |

Source: U.S. Census Bureau, 2021 American Community Survey 5-Year Estimates (B15002)

### STARTING A CAREER

Collaboration among colleges, universities, Workforce Alliance, and local boards of education is preparing students for existing jobs and in sectors with expected growth. Program development is created in concert with employers, government agencies, and local municipalities. While Greater New Haven is best known for its degree programs, there are a host of pathways to success.

**Gateway Community College** offers a wide range of certificate programs to jumpstart a career. Certificate programs include:

- Accounting
- Allied Health
- Automotive Technology
- Business Administration
- Clean Water Management
- Computer Aided Drafting (CAD)
- Computer Science/Web Design
- Culinary Arts
- Drug and Alcohol Recovery Counselor
- Engineering Technology
- Environmental Science
- Hospitality Management
- Mechanical Engineering Technology
- Solar Technology
- Water Management Technology

### Getting Your Degree

Graduates from Gateway Community College can easily transition to the Connecticut State Colleges and Universities system (including New Haven’s own Southern Connecticut State University), University of New Haven, and Quinnipiac University, bringing their earned credits with them.

**Workforce Alliance** (American Jobs Center) [workforcealliance.biz](http://workforcealliance.biz)

Workforce Alliance should be the first stop for both job seekers and businesses looking to hire or upskill their current workforce.

**Skill Up for Manufacturing** is designed to quickly channel unemployed and underemployed people into entry-level manufacturing jobs by providing the fundamentals that employers need in as little as 5 weeks. The program was designed with manufacturing employers who interact with students and discuss job opportunities. The program includes:

- Free 5-Week hybrid classroom & hands-on training
- Cash stipend during training
- Minimum 175 pre-apprenticeship hours
- Six Sigma certification
- OSHA 10 safety card
- Job development

**The Health Careers Advancement Program (HCAP)** provides tuition assistance, professional development, and job placement to eligible job seekers. Individuals who have prior healthcare industry certifications can get help to return to school, add more skills and move up the career ladder!

**Hospitality Career Initiative** is a partnership between the University of New Haven and the New Haven-based nonprofit Workforce Alliance, providing an immersion into the hospitality industry and job placement assistance.

### State of Connecticut Program for Apprenticeships in the Trades

Careers in the trades can offer a rewarding job with good pay and opportunities for growth. A number of industries are growing rapidly and looking for more people with the right training to begin careers in fields such as electrical, elevators and conveyors, plumbing and lawn irrigation, heating, cooling and sheet metal, and glazier automotive and flat glass.

# Demographics 2023



## GREATER NEW HAVEN

|   |           |
|---|-----------|
| Population.....   | 570,275   |
| Households.....   | 221,300   |
| Per Capita Income.....  | \$41,192  |
| Median Household Income.....  | \$75,043  |
| Median Sales Price of Homes -<br>New Haven County.....                      | \$300,000 |
| Median Age.....   | 40.5      |
| Percent of the Population 25+ Years with a Bachelor's Degree or Higher..... | 36.6      |

## BETHANY

|                                  |           |
|----------------------------------|-----------|
| Population.....                  | 5,228     |
| Households.....                  | 1,768     |
| Per Capita Income.....           | \$70,042  |
| Median Household Income.....     | \$136,667 |
| Median Sales Price of Homes..... | \$383,000 |
| Median Age.....                  | 44.1      |

## BRANFORD

|                                  |           |
|----------------------------------|-----------|
| Population.....                  | 28,176    |
| Households.....                  | 12,717    |
| Per Capita Income.....           | \$50,107  |
| Median Household Income.....     | \$87,738  |
| Median Sales Price of Homes..... | \$313,000 |
| Median Age.....                  | 50.8      |

## EAST HAVEN

|                                  |           |
|----------------------------------|-----------|
| Population.....                  | 27,804    |
| Households.....                  | 10,764    |
| Per Capita Income.....           | \$32,860  |
| Median Household Income.....     | \$74,238  |
| Median Sales Price of Homes..... | \$282,000 |
| Median Age.....                  | 41.6      |

## GUILFORD

|                                  |           |
|----------------------------------|-----------|
| Population.....                  | 22,031    |
| Households.....                  | 8,665     |
| Per Capita Income.....           | \$62,405  |
| Median Household Income.....     | \$115,171 |
| Median Sales Price of Homes..... | \$535,000 |
| Median Age.....                  | 48.5      |

## HAMDEN

|                                  |           |
|----------------------------------|-----------|
| Population.....                  | 60,923    |
| Households.....                  | 22,403    |
| Per Capita Income.....           | \$38,228  |
| Median Household Income.....     | \$80,779  |
| Median Sales Price of Homes..... | \$279,000 |
| Median Age.....                  | 36.3      |

## MADISON

|                                  |           |
|----------------------------------|-----------|
| Population.....                  | 17,619    |
| Households.....                  | 6,719     |
| Per Capita Income.....           | \$62,752  |
| Median Household Income.....     | \$140,990 |
| Median Sales Price of Homes..... | \$550,000 |
| Median Age.....                  | 50.1      |

## MERIDEN

|                                  |           |
|----------------------------------|-----------|
| Population.....                  | 60,517    |
| Households.....                  | 25,191    |
| Per Capita Income.....           | \$33,873  |
| Median Household Income.....     | \$59,792  |
| Median Sales Price of Homes..... | \$226,000 |
| Median Age.....                  | 40.8      |

## MILFORD

|                                  |           |
|----------------------------------|-----------|
| Population.....                  | 52,390    |
| Households.....                  | 21,310    |
| Per Capita Income.....           | \$51,837  |
| Median Household Income.....     | \$97,785  |
| Median Sales Price of Homes..... | \$380,000 |
| Median Age.....                  | 44.8      |

## NEW HAVEN

|                                  |           |
|----------------------------------|-----------|
| Population.....                  | 135,081   |
| Households.....                  | 50,264    |
| Per Capita Income.....           | \$27,607  |
| Median Household Income.....     | \$48,973  |
| Median Sales Price of Homes..... | \$235,000 |
| Median Age.....                  | 30.7      |

## NORTH BRANFORD

|                                  |           |
|----------------------------------|-----------|
| Population.....                  | 13,498    |
| Households.....                  | 5,149     |
| Per Capita Income.....           | \$51,275  |
| Median Household Income.....     | \$101,463 |
| Median Sales Price of Homes..... | \$391,000 |
| Median Age.....                  | 49.8      |

## NORTH HAVEN

|                                  |           |
|----------------------------------|-----------|
| Population.....                  | 24,169    |
| Households.....                  | 9,503     |
| Per Capita Income.....           | \$50,363  |
| Median Household Income.....     | \$110,009 |
| Median Sales Price of Homes..... | \$418,000 |
| Median Age.....                  | 46.4      |

## ORANGE

|                                  |           |
|----------------------------------|-----------|
| Population.....                  | 14,246    |
| Households.....                  | 5,169     |
| Per Capita Income.....           | \$56,567  |
| Median Household Income.....     | \$128,171 |
| Median Sales Price of Homes..... | \$484,000 |
| Median Age.....                  | 45.1      |

## WALLINGFORD

|                                  |           |
|----------------------------------|-----------|
| Population.....                  | 44,194    |
| Households.....                  | 18,280    |
| Per Capita Income.....           | \$42,662  |
| Median Household Income.....     | \$88,573  |
| Median Sales Price of Homes..... | \$325,000 |
| Median Age.....                  | 45.5      |

## WEST HAVEN

|                                  |           |
|----------------------------------|-----------|
| Population.....                  | 55,294    |
| Households.....                  | 20,341    |
| Per Capita Income.....           | \$30,103  |
| Median Household Income.....     | \$66,858  |
| Median Sales Price of Homes..... | \$278,000 |
| Median Age.....                  | 35        |

## WOODBRIIDGE

|                                  |           |
|----------------------------------|-----------|
| Population.....                  | 9,045     |
| Households.....                  | 3,057     |
| Per Capita Income.....           | \$70,114  |
| Median Household Income.....     | \$171,652 |
| Median Sales Price of Homes..... | \$550,000 |
| Median Age.....                  | 47.1      |

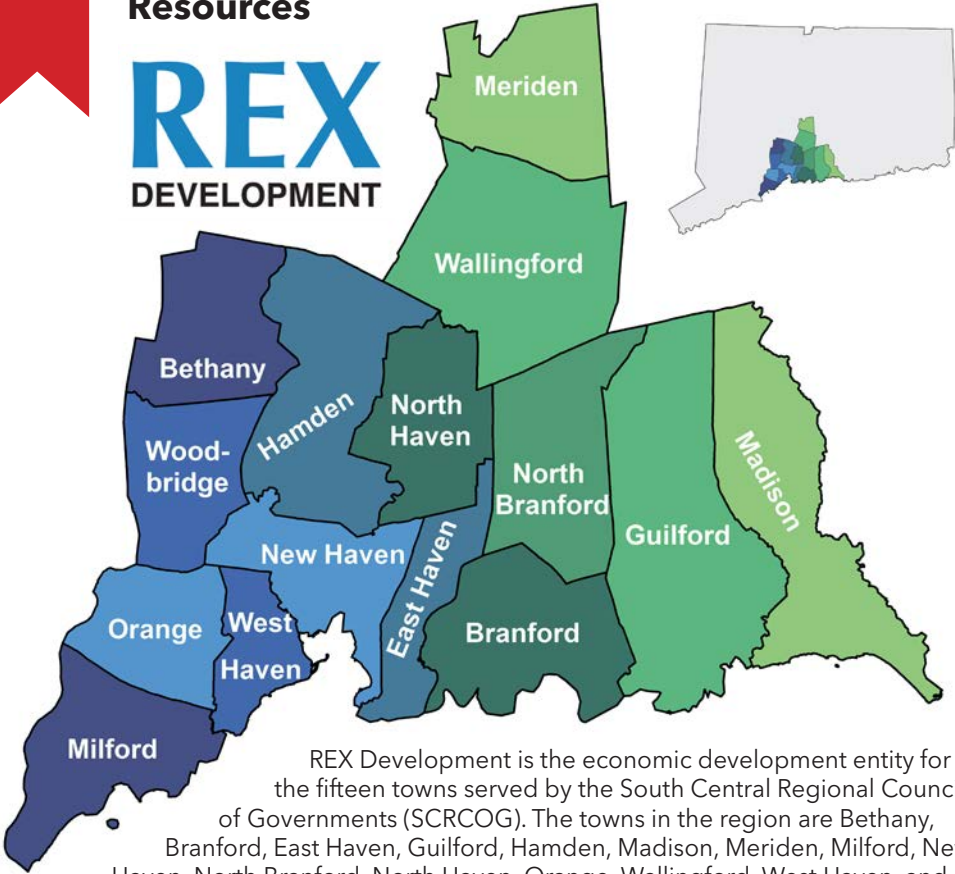
Sources: 2021 Census Quick Facts, [ctdata.org](https://ctdata.org), Berkshire Hathaway Quarterly Market Report, Q4 2022



Resources

# REX

DEVELOPMENT



REX Development is the economic development entity for the fifteen towns served by the South Central Regional Council of Governments (SCRCOG). The towns in the region are Bethany, Branford, East Haven, Guilford, Hamden, Madison, Meriden, Milford, New Haven, North Branford, North Haven, Orange, Wallingford, West Haven, and Woodbridge. Working with other economic development organizations, we can help you start, expand, or relocate your business within Greater New Haven. We aim to connect you with supportive professionals and beneficial programs to meet your goals.

For assistance, don't hesitate to get in touch with us at 203-821-3682 or email [learnmore@rexdevelopment.org](mailto:learnmore@rexdevelopment.org).

ECONOMIC DEVELOPMENT RESOURCES BY TOWN

| TOWN           | NAME               | EMAIL  | PHONE        |
|----------------|--------------------|--|--------------|
| Bethany        | Paula Cofrancesco  | <a href="mailto:pcofrancesco@bethany-ct.com">pcofrancesco@bethany-ct.com</a>                     | 203-393-2100 |
| Branford       | Perry Maresca      | <a href="mailto:pmaresca@branford-ct.gov">pmaresca@branford-ct.gov</a>                           | 475-837-3622 |
| East Haven     | Michelle Benivegna | <a href="mailto:M.Benivegna@townofeasthavenct.org">M.Benivegna@townofeasthavenct.org</a>         | 203-468-3371 |
| Guilford       | Sheri Cote         | <a href="mailto:cotes@ci.guilford.ct.us">cotes@ci.guilford.ct.us</a>                             | 203-453-8071 |
| Hamden         | Erik Johnson       | <a href="mailto:EJohnson@hamden.com">EJohnson@hamden.com</a>                                     | 203-287-7033 |
| Madison        | Sheri Cote         | <a href="mailto:cotes@madisonct.org">cotes@madisonct.org</a>                                     | 203-245-5633 |
| Meriden        | Joseph Feest       | <a href="mailto:jfeest@meridenct.gov">jfeest@meridenct.gov</a>                                   | 203-630-4152 |
| Milford        | Julie Nash         | <a href="mailto:jnash@ci.milford.ct.us">jnash@ci.milford.ct.us</a>                               | 203-783-3230 |
| New Haven      | Kathleen Krolak    | <a href="mailto:kkrolak@newhavenct.gov">kkrolak@newhavenct.gov</a>                               | 203-946-6982 |
| North Branford | Michael Downes     | <a href="mailto:townmanager@townofnorthbranfordct.com">townmanager@townofnorthbranfordct.com</a> | 203-484-6010 |
| North Haven    | Michael Freda      | <a href="mailto:Freda.Michael@town.north-haven.ct.us">Freda.Michael@town.north-haven.ct.us</a>   | 203-239-5321 |
| Orange         | Annemarie Sliby    | <a href="mailto:Asliby@orangeedc.com">Asliby@orangeedc.com</a>                                   | 203-891-1045 |
| Wallingford    | Joe Mirra          | <a href="mailto:edc@wallingfordct.gov">edc@wallingfordct.gov</a>                                 | 203-294-2062 |
| West Haven     | Douglas Colter     | <a href="mailto:dcolter@westhaven-ct.gov">dcolter@westhaven-ct.gov</a>                           | 203-937-3640 |
| Woodbridge     | Geraldine S. Shaw  | <a href="mailto:gshaw@woodbridgect.org">gshaw@woodbridgect.org</a>                               | 203-389-3401 |



## Resources

### STATE OF CONNECTICUT RESOURCES

**AdvanceCT**, [advancect.org](http://advancect.org)

**BioCT**, [biocct.org](http://biocct.org)

**Connecticut Department of Economic and Community Development**, [portal.ct.gov/DECD](http://portal.ct.gov/DECD)

**Connecticut Data Collaborative**, [ctdata.org](http://ctdata.org)

**Connecticut Department of Labor**, [portal.ct.gov/dol/](http://portal.ct.gov/dol/)

**Connecticut Department of Revenue Services**, [portal.ct.gov/drs](http://portal.ct.gov/drs)

**Connecticut Center for Advanced Technology, Inc.**, [ccat.us](http://ccat.us)

**Connecticut Innovations**, [ctinnovations.com](http://ctinnovations.com)

**CTNext**, [ctnext.com](http://ctnext.com)

**CT SiteFinder**, [advancect.org/site-selection/ct-sitefinder](http://advancect.org/site-selection/ct-sitefinder)

**Small Business Administration Connecticut Division**, [sba.gov/district/connecticut](http://sba.gov/district/connecticut)

**Small Business Development Center**, [ctsbdc.uconn.edu](http://ctsbdc.uconn.edu)

### CHAMBERS OF COMMERCE

**East Haven Chamber of Commerce**, P.O. Box 120055, East Haven. 203-467-4305, [easthavenchamber.com](http://easthavenchamber.com)

**Greater New Haven Chamber of Commerce**, 900 Chapel St., 10th Fl., New Haven. 203-787-6735, [gnhcc.com](http://gnhcc.com)

**Hamden Regional Chamber of Commerce**, 3074 Whitney Ave., Hamden. 203-288-6431, [hamdenregionalchamber.com](http://hamdenregionalchamber.com)

**Madison Chamber of Commerce**, 12 School Street, P.O. Box 706, Madison. 203-245-7394, [madisonct.com](http://madisonct.com)

**Middlesex Chamber of Commerce**, 393 Main St., Middletown. 860-347-6924, [middlesexchamber.com](http://middlesexchamber.com)

**Midstate Chamber of Commerce**, 546 South Broad St. #2C, Meriden. 203-235-7901, [midstatechamber.com](http://midstatechamber.com)

**Milford Regional Chamber of Commerce**, 1201 Boston Post Rd., Unit 1100, Milford. 203-878-0681, [milfordct.com](http://milfordct.com)

**Orange Chamber of Commerce**, 605A Orange Center Rd., Orange. 203-795-3328, [orangectchamber.com](http://orangectchamber.com)

**Quinnipiac Chamber of Commerce**, 50 North Main St. 2nd Fl., Wallingford. 203-269-9891, [quinncham.com](http://quinncham.com)

**Shoreline Chamber of Commerce**, 2614 Boston Post Rd., Guilford. 203-488-5500, [shorelinechamberct.com](http://shorelinechamberct.com)

### COWORKING SPACES

**1253 Whitney**, 1247 & 1253 Whitney Ave., Hamden. 203-780-8890, [whitneyvillecultural-commons.org/coworking](http://whitneyvillecultural-commons.org/coworking)

**DistriCT New Haven**, 470 James St., New Haven. 203-285-8341, [districtnhv.com](http://districtnhv.com)

**Greater New Haven Chamber of Commerce**, 900 Chapel St. 10th Fl., New Haven. 203-787-6735, [gnhcc.com](http://gnhcc.com)

**HUBCAP Wallingford**, 128 Center St., Wallingford. 203-626-9351, [hubcapwallingford.org](http://hubcapwallingford.org)

**KNOWN Coworking**, 139 Orange St. 4th Floor, New Haven. [nhvknown.com](http://nhvknown.com)

**Marlin Works**, 85 Willow St., New Haven. 203-387-9700, [marlinworksnewhaven.com](http://marlinworksnewhaven.com)

**New Haven Free Public Library**, 133 Elm St., New Haven. 203-946-8130, [nhfpl.org](http://nhfpl.org)

**Regus**, 157 Church St. 19th Fl., New Haven. 475-655-3000, [regus.com](http://regus.com)

**S\*Park Innovation**, 5 Science Park, New Haven. 203-497-3953, [scienceparknewhaven.org](http://scienceparknewhaven.org)

**Urban Collective**, 85 Willow St., New Haven. [theurbancollectivect.com](http://theurbancollectivect.com)

**The Work Station**, 150 Boston Post Rd., Madison. 203-494-4738, [attheworkstation.com](http://attheworkstation.com)

### EDUCATION

**Chapel Haven Schleifer Center Inc.**, 1040 Whalley Ave., New Haven. Chapel Haven, an award-winning postsecondary and transition program, empowers adults with social and developmental disabilities to live independent and self-determined lives. Our new campus includes outstanding modern residences, classrooms, common spaces, and the new Schleifer Adult Independent Living (SAIL) facility for lifelong support. Daily, 24 hours. Tuition varies. 203-397-1714 ext. 148, [chapel-haven.org](http://chapel-haven.org)

### COMMUNITY CENTERS

**JCC of Greater New Haven**, 360 Amity Rd., Woodbridge. We provide quality programs and services that meet the social, cultural, educational, and recreational needs of everyone in the community. Activities include community development, learning, fitness & aquatics, summer camp, and youth and adult enrichment. 203-387-2424, [jccnh.org](http://jccnh.org)



**Skip the  
drive, avoid  
the hassle.**

Enjoy the  
convenience  
of flying on  
Avelo at  
Tweed.



**flytweed.com**

## List Of Advertisers

|   |            |
|---|------------|
| Amistad Committee Inc.....                            | 16         |
| Beinecke Rare Book &<br>Manuscript Library .....      | 39         |
| Bishop's Orchards and Winery .....                    | 6          |
| Chapel Haven Schleifer Center .....                   | 31         |
| Courtyard by Marriott Orange/Milford ....             | 2          |
| Courtyard by Marriott at Yale .....                   | 46         |
| CT River Museum .....                                 | 15         |
| CT Science Senter .....                               | 8          |
| Devon Motel.....                                      | 46         |
| Foxwoods Casino .....                                 | 67         |
| Greater New Haven<br>Chamber Of Commerce .....        | 18         |
| Guilford Art Center.....                              | 11         |
| Jewish Federation of<br>Greater New Haven .....       | 52         |
| Key Foods.....  | 18         |
| L'ORCIO.....  | 20         |
| Market New Haven .....                                | 4          |
| Mashantucket Pequot Museum<br>& Research Center.....  | 13         |
| New Haven Economic<br>Development Administration..... | 50         |
| New Haven Museum .....                                | 13         |
| Olea New Haven .....                                  | 18         |
| Palestine Museum .....                                | 16         |
| Paradise Hills Vineyards .....                        | 23         |
| Seaside Home and Gifts .....                          | 46         |
| Shops at Yale .....                                   | 3          |
| Shoreline Chamber of Commerce .....                   | 10         |
| Thimble Islands Cruise .....                          | 26         |
| Town Green Special Service District....               | 27         |
| Tweed-New Haven Regional Airport...66                 |            |
| University of New Haven .....                         | 8          |
| Yale Art Gallery.....                                 | Back Cover |
| Yale Center for British Art.....                      | Back Cover |

# GET IN ON THE EXCITEMENT



## IT'S TIME TO ENJOY YOURSELF

Experience the best dining, shopping and adventures at Foxwoods! Plan and book your stay today at [foxwoods.com](http://foxwoods.com).



[FOXWOODS.COM](http://FOXWOODS.COM) ♦ 800.369.9663





YALE  
UNIVERSITY  
ART  
GALLERY

Free and open  
to the public

[artgallery.yale.edu](http://artgallery.yale.edu)  
f t i o ▶ @yaleartgallery

**The Yale Center for British Art is  
currently closed for renovation.**

**Visit us online for project updates,  
programs, and collections access.**

YALE  
CENTER  
FOR  
BRITISH  
ART

Highlights from the YCBA collection are on view at  
the Yale University Art Gallery through December 3.

[britishart.yale.edu](http://britishart.yale.edu) @yalebritishart f t i o ▶

Aerial view of the Yale Center for British Art, photo by Trident Aerial Imagery